

F 548

.5

.R 51



Class F548

Book 3R51

Copyright N<sup>o</sup> \_\_\_\_\_

**COPYRIGHT DEPOSIT.**





F  
48  
5  
51

V



One Hundred  
and  
Twenty-Five  
Photographic  
Views of Chicago



THE NEW CHICAGO POST OFFICE AND UNITED STATES FEDERAL BUILDING

Occupies the block enclosed by Dearborn Street, Jackson Boulevard, Clark, and Adams streets. This magnificent edifice, described by one writer as "a poem in stone," cost \$4,850,000.

ONE HUNDRED AND TWENTY-FIVE  
PHOTOGRAPHIC VIEWS  
OF  
CHICAGO

503  
1002

THE MOST COMPLETE COLLECTION EVER PUBLISHED  
IN THIS FORM.

CHICAGO AND NEW YORK:  
RAND, McNALLY & CO., PUBLISHERS.

F 548  
5  
R 51

Copyright, 1902, by Rand McNally & Co.  
Copyright, 1907, by Rand McNally & Co.  
Copyright, 1900, by Rand McNally & Co.  
Copyright, 1910, by Rand McNally & Co.

12-37866



© Cl. A 2659 16



# CHICAGO

---

THE photo-sketches included in this Album depict the tumultuous life of the most cosmopolitan city in the world. Within the memory of men yet living this metropolis of the Central States was an Indian garrison, but, with Alladin-like rapidity, its size and importance have increased, and it is now the second largest city in the Western Hemisphere, with a population in excess of 2,000,000 people.

There are three divisions of the city, viz: the North, South, and West sides. These are formed by the windings of the river from which the town took its name, and which empties into Lake Michigan near the lower western extremity of that inland sea.

Chicago is the greatest railway center in the world, and has six important terminal stations. Its arrangements for local transportation are most adequate and complete, and include four elevated systems, as well as a large number of electric lines with many miles of track.

The business interests of the city embrace every imaginable branch of commerce and manufacture. As a grain, lumber, live-stock, and packing market it stands supreme.

The hotels are numerous, many of them being housed in buildings that are splendid examples of modern architecture. Some of the leading hostelrys are: The Auditorium, the Congress and Annex, Great Northern, Palmer

House, Stratford, La Salle, Hotel Blackstone, Virginia, Alexandria, Wellington, Lexington, Majestic, Metropole, Morrison, Grand Pacific, Lakota, Windsor-Clifton, Grace, Del Prado, Sherman House, Chicago Beach, Brevoort, Saratoga, Transit, Vendome, and Plaza.

Among theatres and public halls in Chicago may be mentioned the Auditorium, Orchestra Hall, Powers, Illinois, Grand Opera House, the Studebaker, Chicago Opera House, Garrick, Lyric, McVickers, Bush Temple of Music, Majestic, Colonial, Whitney, Olympic, Haymarket, Princess, Ziegfeld, Cort, and the American.

Some of the largest and finest parks in the world are to be found here. A boulevard system has been arranged which unites the three divisions of the city, and at the same time provides a continuous park driveway, or promenade, of unprecedented beauty, extending for a distance of nearly sixty miles.

The public spirit of the city is one of its characteristic features. Its provisions for education are unexcelled, and the University of Chicago, organized in 1891, has grown as phenomenally as has Chicago itself. The new Post Office, Public Libraries, Art Galleries, Museums, and Academies of Science compare favorably with similar institutions in any American city or cities of foreign countries.



THE CITY HALL AND COOK COUNTY COURT HOUSE

Are located in a huge building on the square facing Washington, Clark, La Salle, and Randolph Streets. The cost of the building, which was erected in 1877 to 1882, amounted to \$6,000,000. It is one of the chief landmarks of the city.



THE CHICAGO PUBLIC LIBRARY,

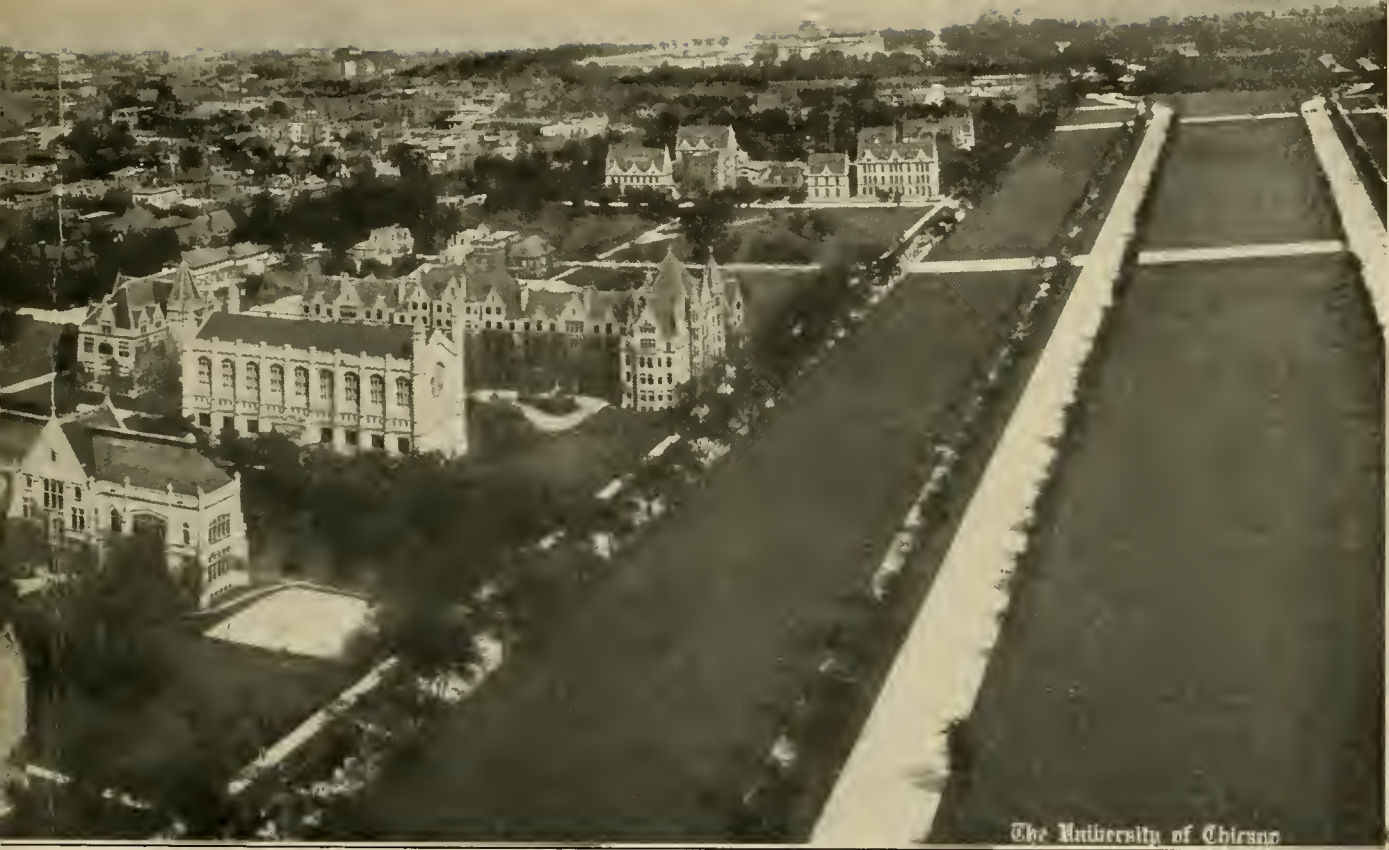
A massive structure located at Michigan Avenue and Washington Street. Its magnificent inside finish in marble and mother-of-pearls rare stones, etc., is a delight to the eye. In it is housed the free public library, with its adjuncts of reading, exchange, and catalogue rooms.



(West Front.)

A BIRD'S-EYE VIEW OF THE U

This great educational institution ranks with the foremost in the country, and is one of the largest in the world. Its campus, which covers 1,200 acres, extends along the north side of the beautiful Midway Plaisance and adjoins the city of Chicago at an ideal location. There are now thirty-one buildings in this map, including the new Memorial Library to the first president of the



The University of Chicago

UNIVERSITY OF CHICAGO.  
(South Front.)  
The most noteworthy features of the city. Its spacious campuses of ninety-five  
acres are adjacent to both Jackson and Washington parks. This gives the University  
an excellent location, with more projected, among them a superb  
university, Dr. William Rainey Harper.



#### THE ART INSTITUTE.

On Michigan Avenue, is a monumental structure built of limestone, which is owned by the City of Chicago, and contains many classical and modern masterpieces of fine art. The collections are open to the public free of charge on Wednesdays and Saturdays, on Sundays, and on legal holidays.



#### THE NEWBERRY LIBRARY

Was provided for by the late W. A. Newberry, a wealthy Chicago citizen, who bequeathed nearly \$2,500,000 to the establishment of a library on the North Side. The building, which was erected at a cost of \$900,000, is on North Clark Street, facing Walton Place.



MARSHALL FIELD & COMPANY'S GREAT RETAIL STORE.

Wabash Avenue, Randolph, State, and Washington streets. The finest retail store in the world. The main entrance is on State Street.



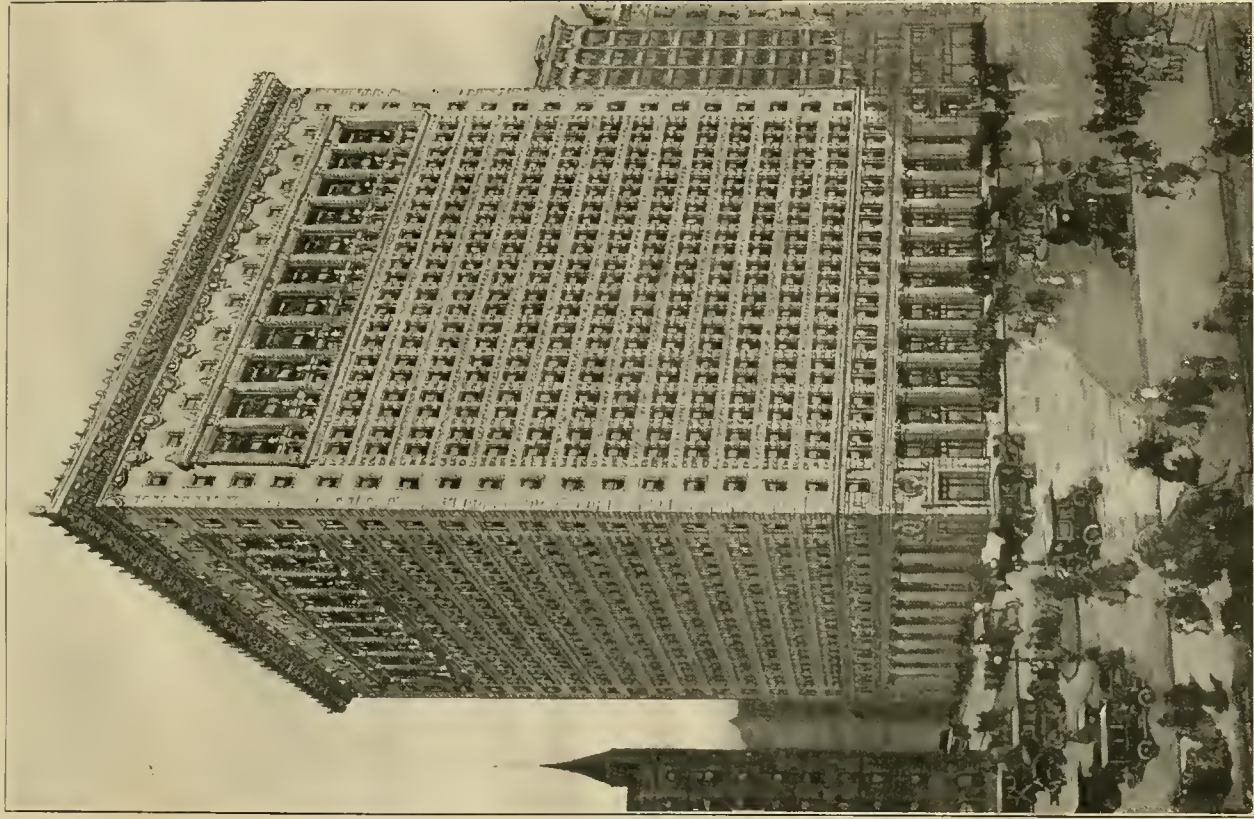


A TWENTIETH CENTURY DEPARTMENT STORE.

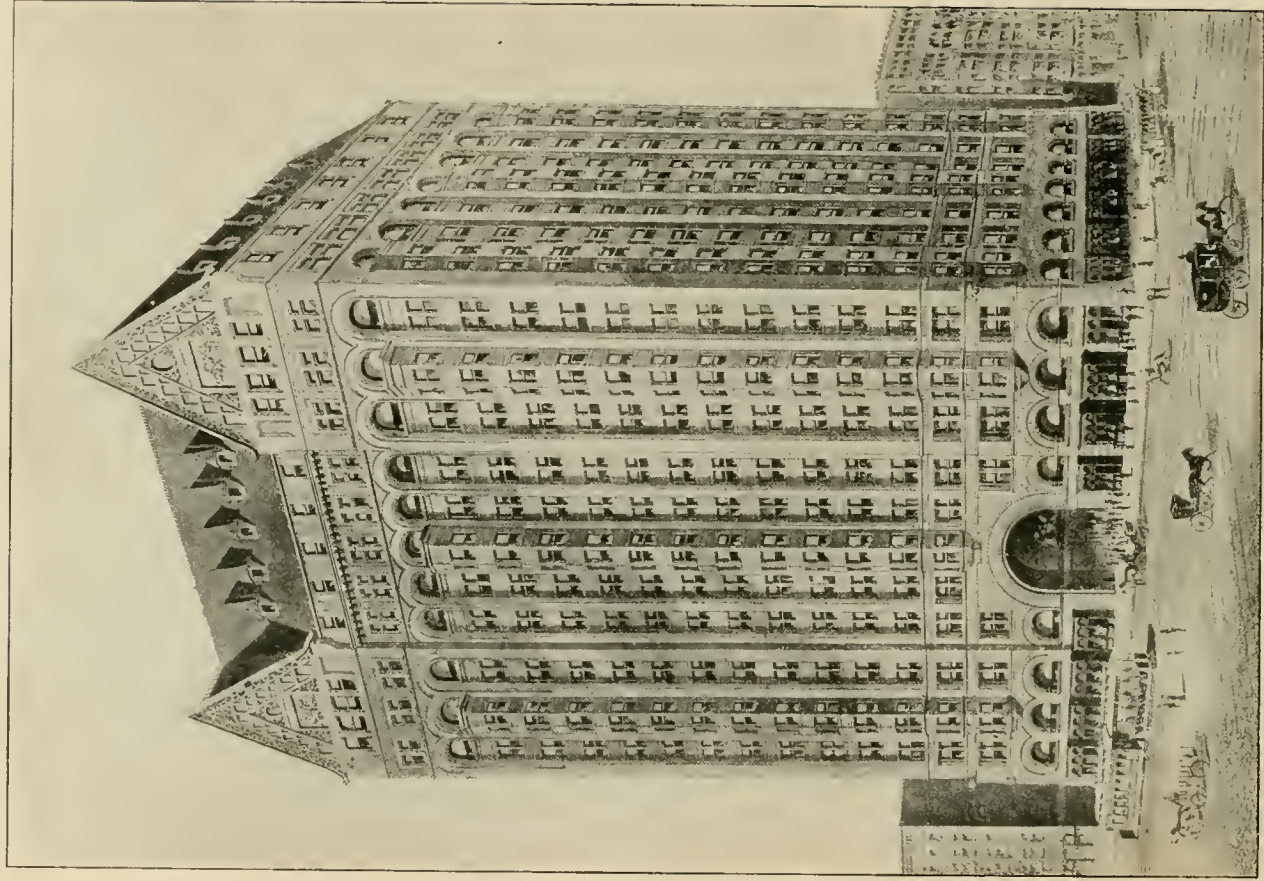
The "Fair," one of Chicago's largest department stores, covers half of one entire city block, facing on State, Adams, and Dearborn streets.



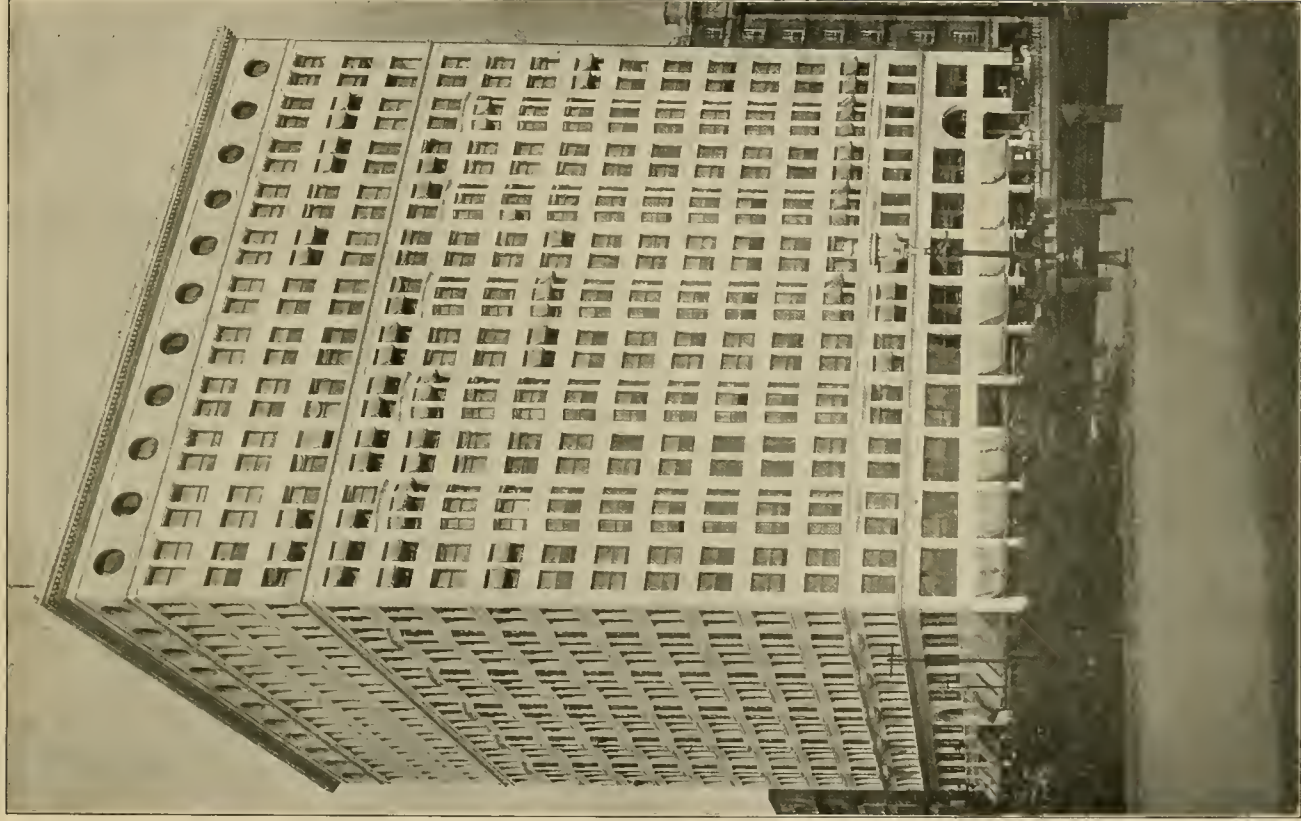
THE SIEGEL-COOPER DEPARTMENT STORE  
Is, like "The Fair," one of Chicago's great sights, and occupies an entire block facing Van Buren, Congress, and State streets.



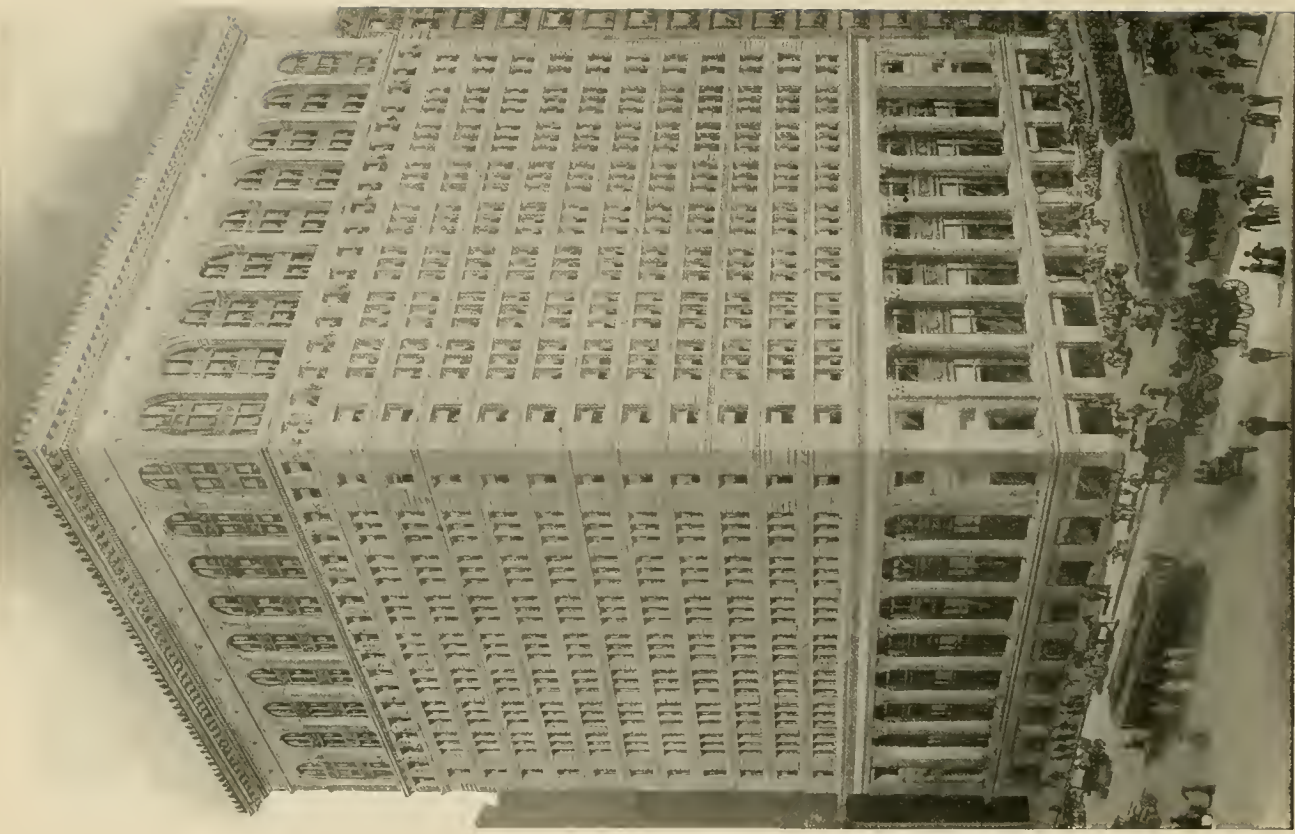
THE PEOPLES GAS BUILDING  
Northwest corner Adams and Michigan Boulevard. This magnificent structure is  
twenty-two stories high and is one of the handsomest in the city. The eighteen  
highly polished granite columns on the facade giving it an air of great distinction.



THE MASONIC TEMPLE,  
Corner of State and Randolph streets.

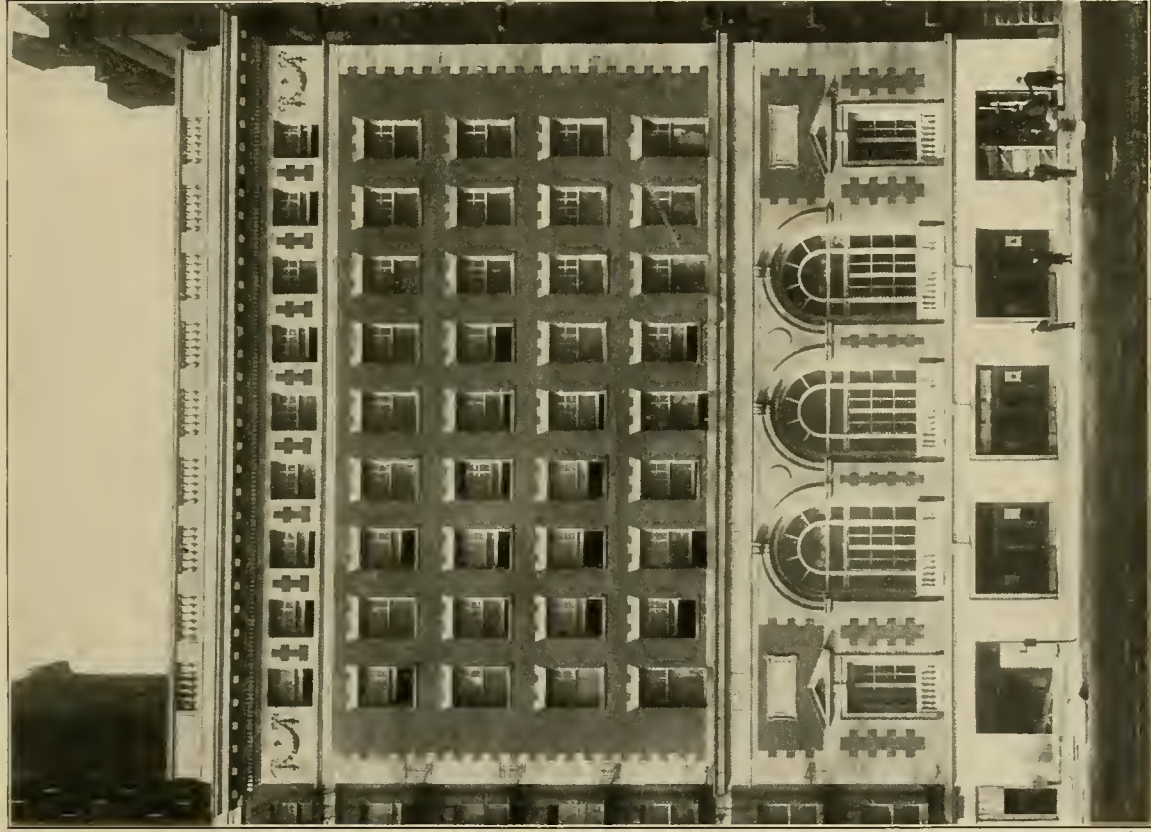


RAILWAY EXCHANGE BUILDING,  
Northwest corner of Michigan and Jackson boulevards.



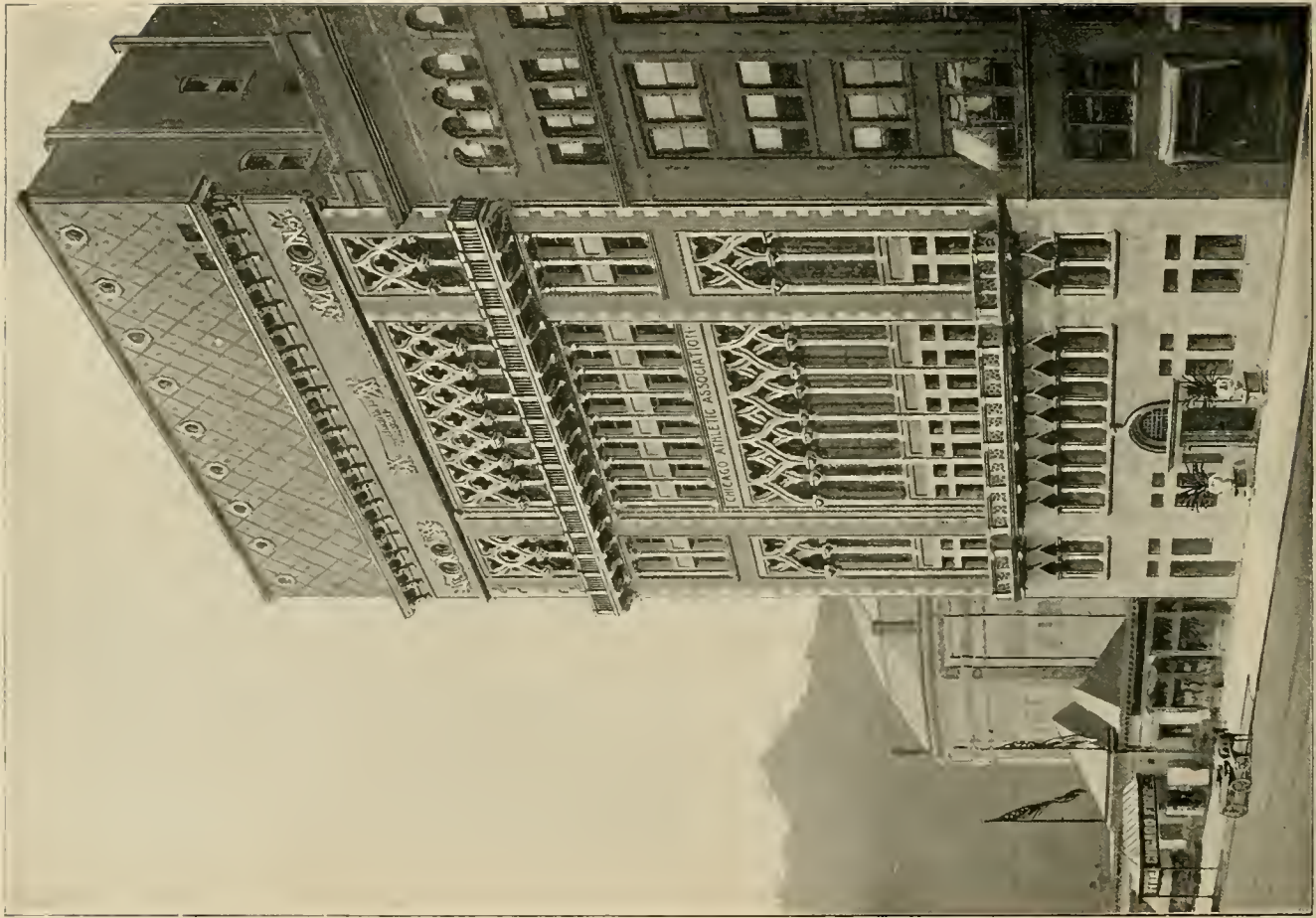
THE NEW COMMERCIAL NATIONAL BANK BUILDING,

North-east corner of Adams and Clark streets. It is seventeen stories high, and was completed in 1907. It occupies one of the choicest corners in the city, directly opposite the post office and federal building.

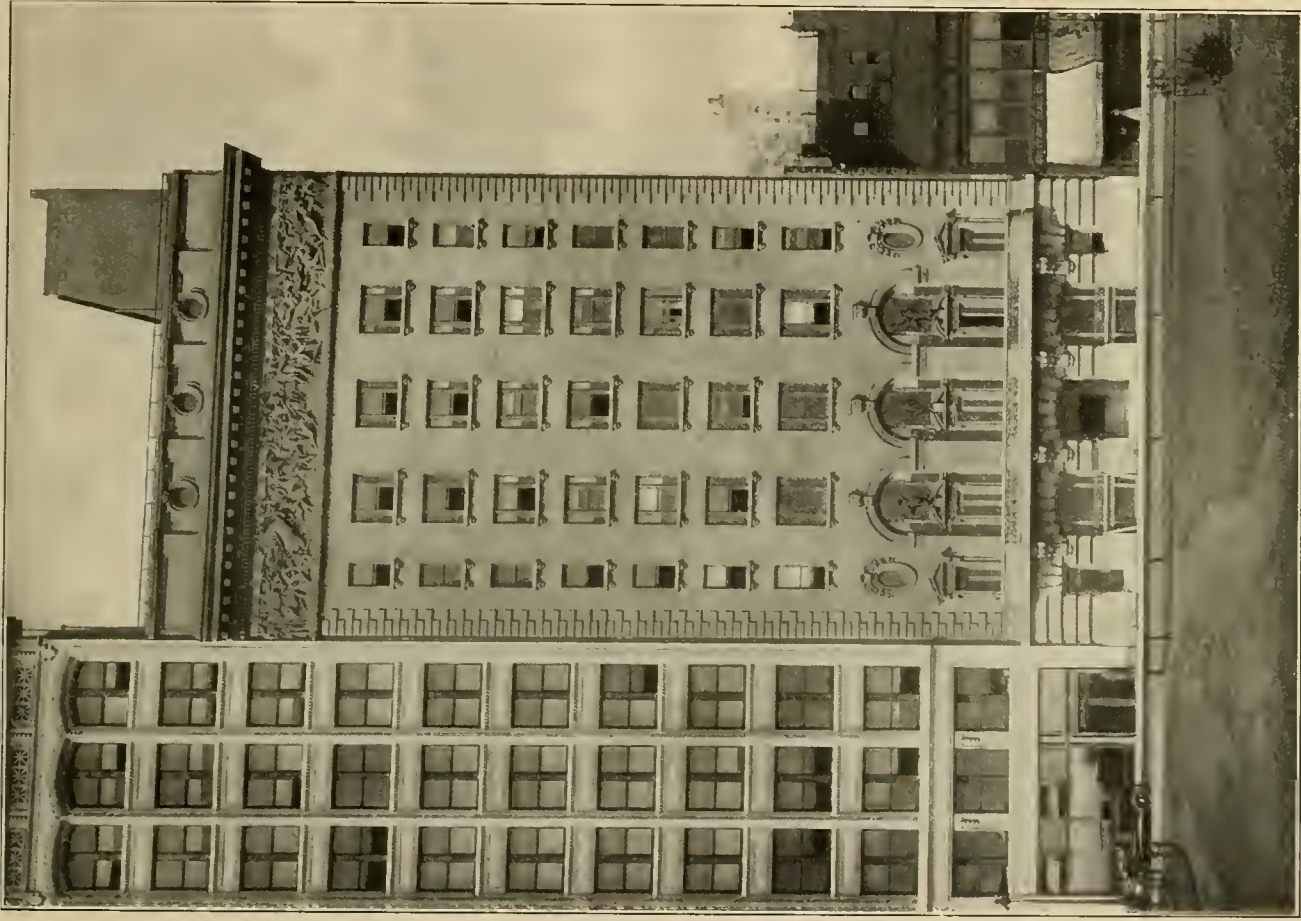


#### ORCHESTRA HALL.

This beautiful building, dedicated to music, stands on Michigan Boulevard between Adams Street and Jackson Boulevard. It was built by the people of Chicago to provide a permanent home for the renowned Theodore Thomas Orchestra.







NEW ILLINOIS ATHLETIC CLUB,  
145 Michigan Avenue. This beautiful building cost \$800,000, and is devoted exclusively to  
the use of the members of this popular Chicago club. It was completed in 1907.



STATE STREET, LOOKING NORTH FROM QUINCY STREET.

The tall building at the left is the Mentor Building; Carson, Pirie, Scott & Co.'s great store lies just beyond; and, at the right, on the corner of Monroe, is the Palmer House, one of the oldest and best known hostelries in the city.  
In the foreground to the right is the handsome Republic Building.



MICHIGAN BOULEVARD, LOOKING NORTH FROM THE FINE ARTS BUILDING.

In the foreground on the left is the beautiful Auditorium and Fine Arts Building and just beyond, the imposing home of the Chicago Club. The tall white building, still farther along, is the Railway Exchange. The slender tower in the perspective, marks Montgomery Ward & Co.'s great mail-order house. Midway on the right, in Grant Park, is the Art Institute.



CHICAGO'S WATER FRONT,  
Michigan Boulevard, one of the finest thoroughfares in the world, is lined, where  
Crowding into the background are to be seen many of the



VIEW FROM LAKE MICHIGAN.

views the lake, with a succession of superb hotels, clubhouses, and office buildings. skyscrapers which loom up all over the business district.



A TYPICAL CROWD ON A SUNNY DAY IN STATE STREET.

The southeast corner of State and Washington streets looking south in State Street. A daily scene in the busiest shopping thoroughfare in the world.



THE MCKINLEY MEMORIAL PROCESSION.

This procession formed a part of the memorial exercises held on the occasion of the death of President McKinley, in 1901. The illustration shows the troops marching on State Street with reversed arms, followed by a battery of artillery from Fort Sheridan.



THE PALMER HOUSE.

One of Chicago's leading hotels, is located at State and Monroe streets.





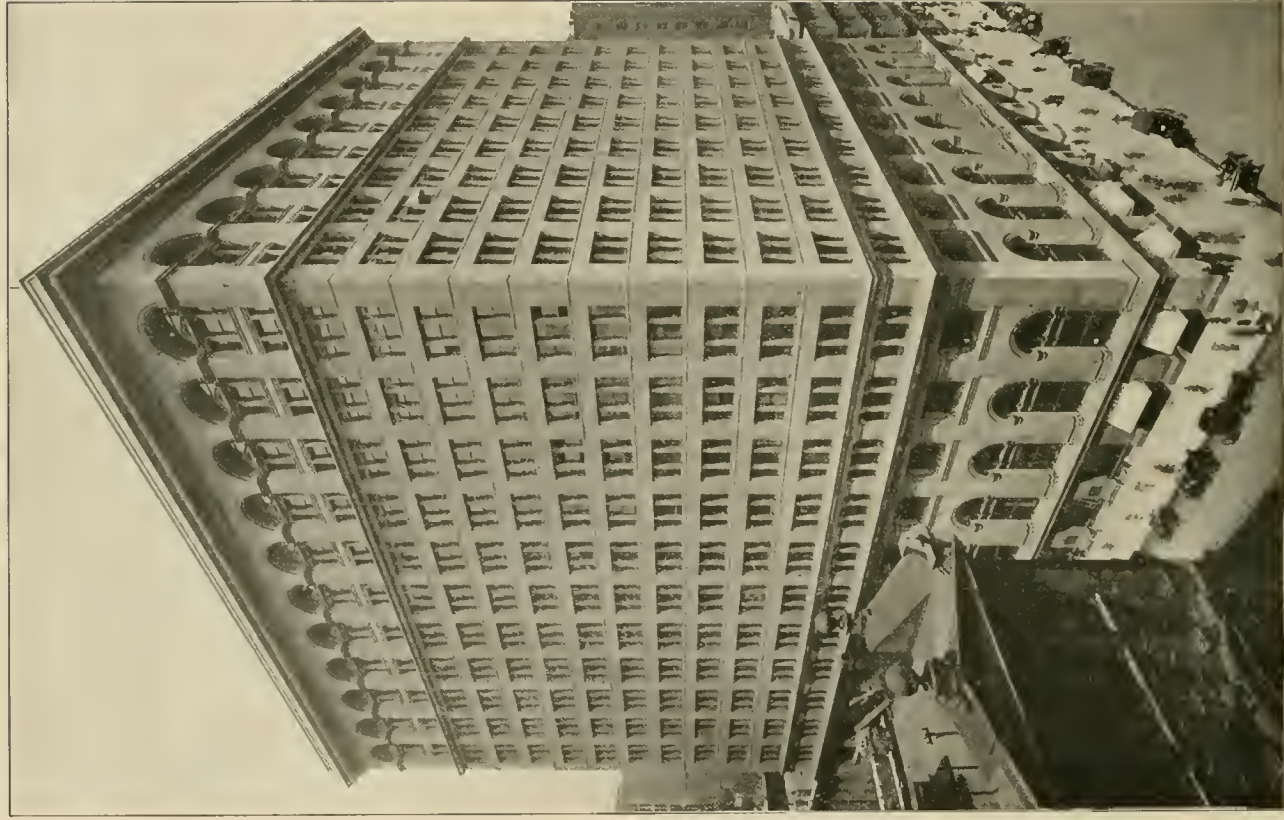
CONGRESS, ANNEX, AND AUDITORIUM HOTELS,  
Located on the Lake Front overlooking Grant Park.



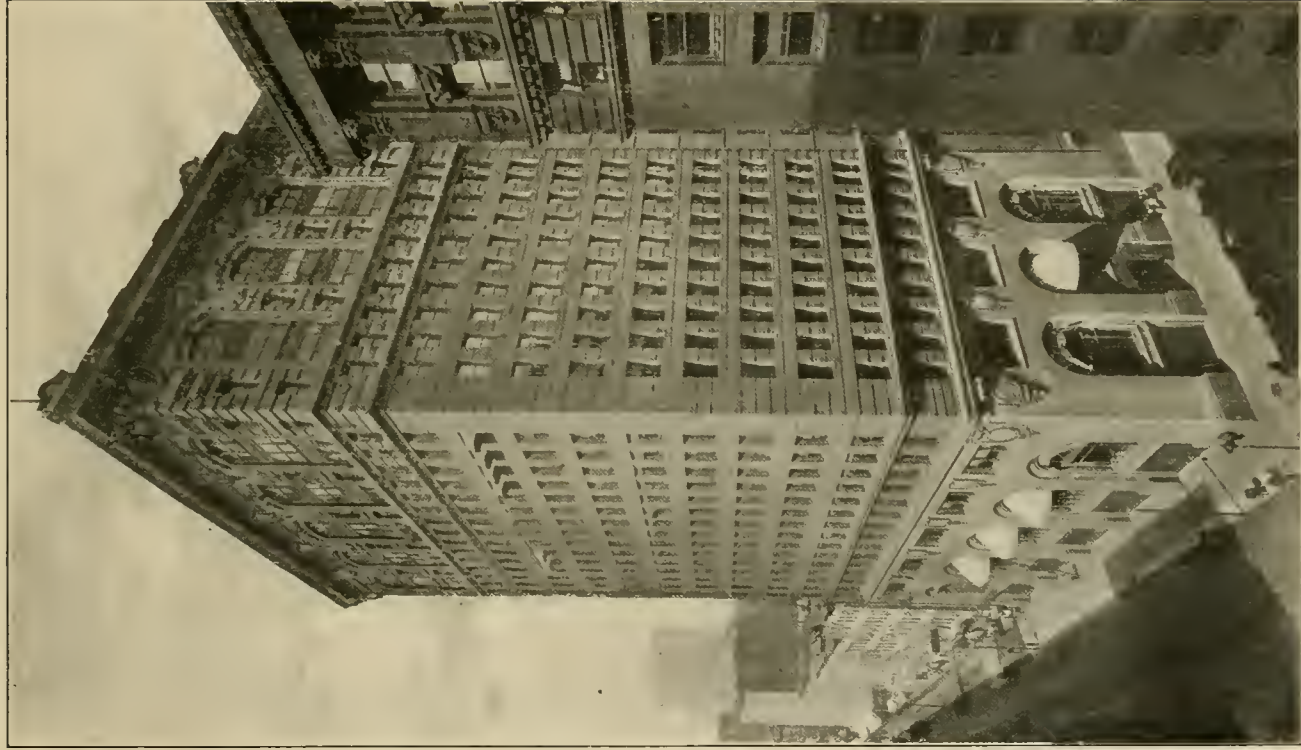
THE ILLINOIS TRUST AND SAVINGS BANK BUILDING,  
Corner of La Salle Street and Jackson Boulevard.



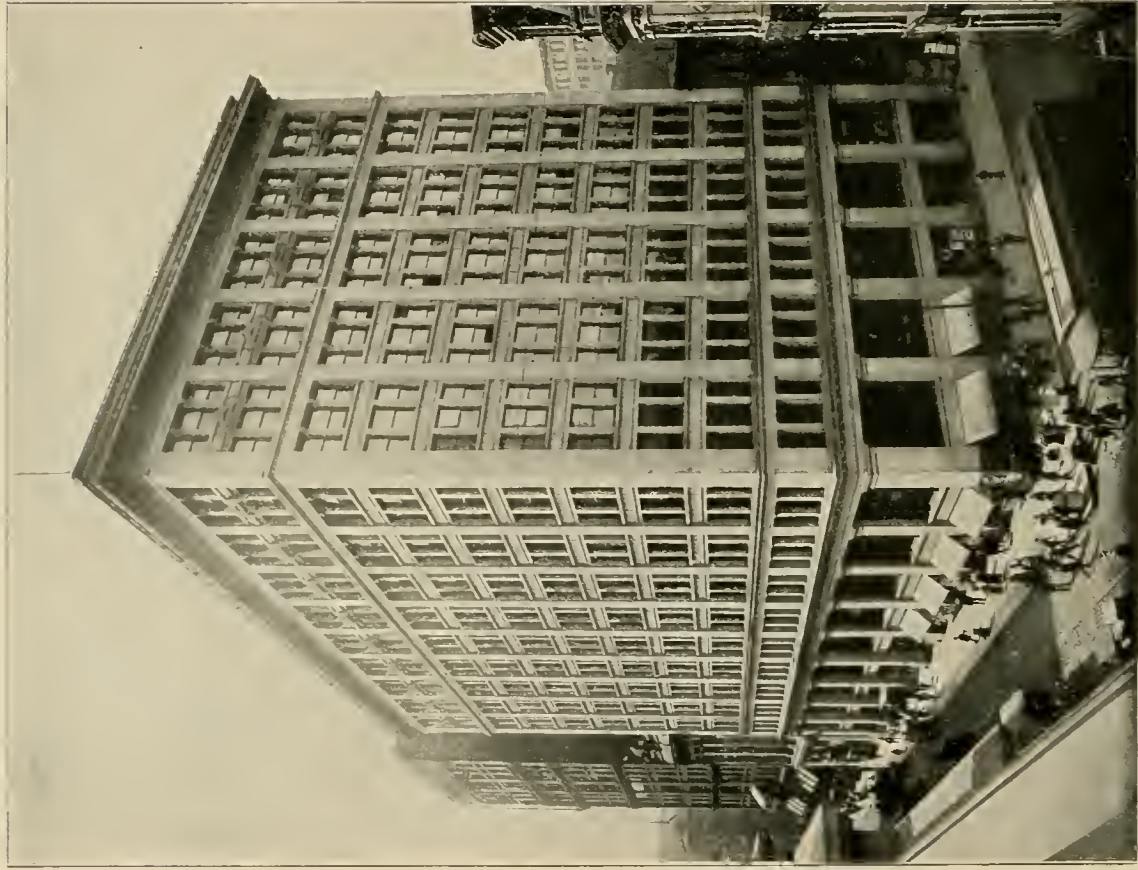
THE NORTHERN TRUST COMPANY'S BANK BUILDING,  
Corner of La Salle and Monroe streets.



FIRST NATIONAL BANK BUILDING,  
Northwest corner Dearborn and Monroe streets.



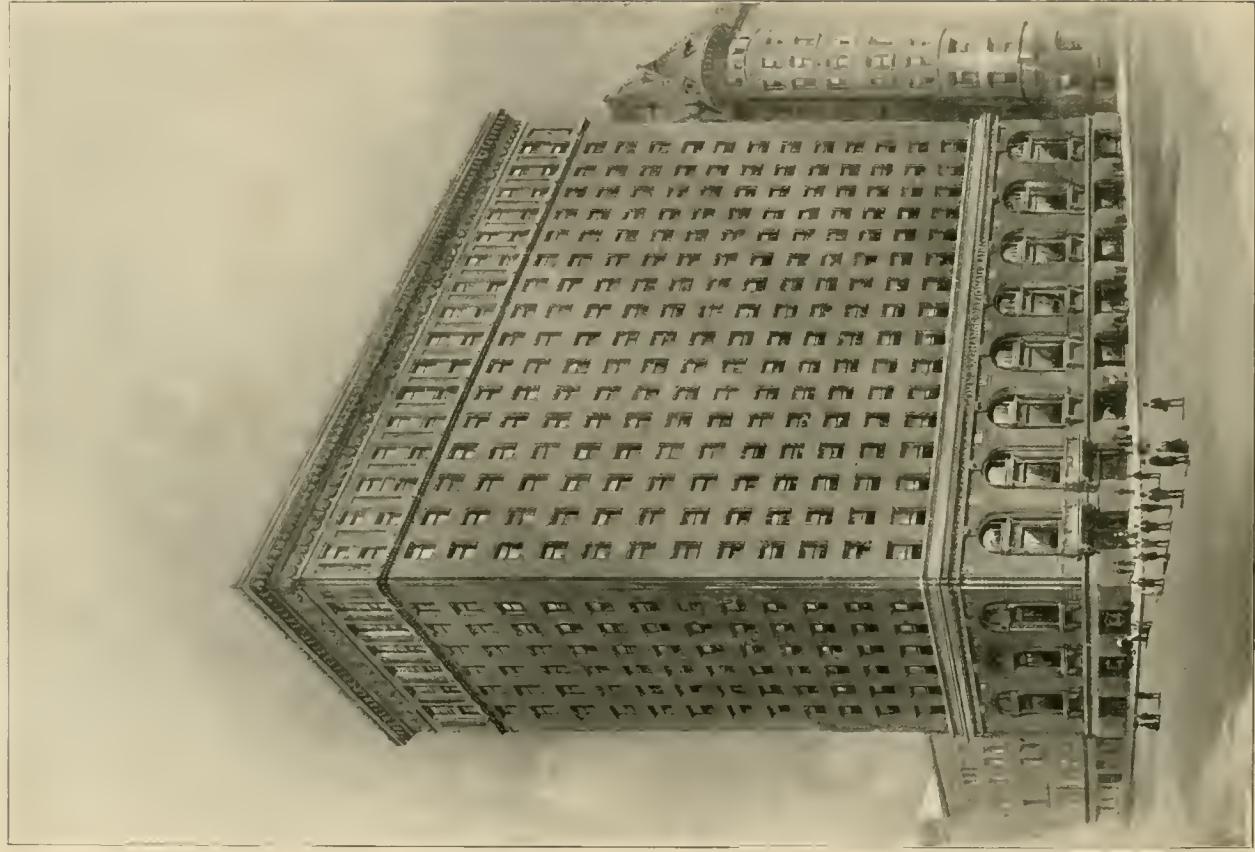
THE AMERICAN TRUST AND SAVINGS BANK BUILDING, Northeast corner Monroe and Clark streets. It is eighteen stories high, and was completed in 1906. Land and building cost \$1,500,000.



MERCHANTS LOAN AND TRUST COMPANY BUILDING,  
Northwest corner Adams and Clark streets.

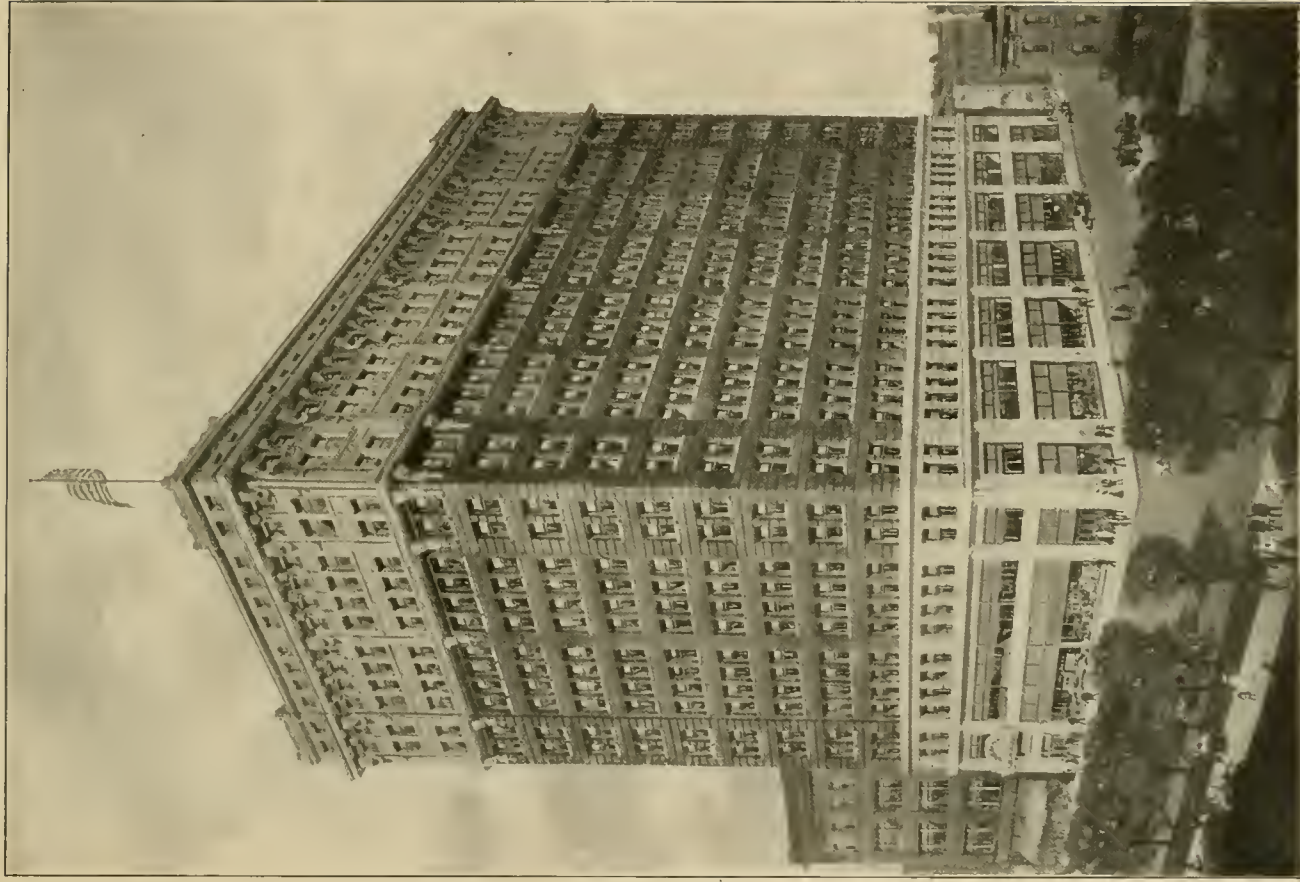


CHICAGO SAVINGS BANK BUILDING,  
Southwest corner State and Madison streets.



THE CORN EXCHANGE NATIONAL BANK BUILDING,  
Corner of La Salle and Adams streets.





**THE INTERNATIONAL HARVESTER BUILDING,**

Northwest corner Harrison Street and Michigan Avenue. It is fifteen stories high, was completed in 1927, and cost \$850,000. The general offices of the Harvester Company occupy the ten upper floors. The lower floors are leased to outside firms.



THE CHICAGO HISTORICAL SOCIETY'S BUILDING,

Located at 142 Dearborn Avenue, is occupied by the Chicago Historical Society, and affords a safe place of deposit for many valuable historical documents and relics relating to the former days of Chicago and surroundings.



THE COLISEUM—CHICAGO'S FAMOUS CONVENTION HALL,

Sixteenth Street and Wabash Avenue. The building is 400 feet long and 175 feet wide. It seats 10,000 people, and cost \$500,000. The front is a portion of the historic Libby Prison. The building is used for National Conventions, industrial expositions, horse shows, and other public exhibitions.



COPYRIGHT BY  
THE GEORGE EASTMAN CO.  
270 WABASH AVE  
CHICAGO

THE GREAT CHICAGO-CA  
This game, which aroused so much interest among football devotees, was played on the fa  
and the team from the Indian School at Carlisle, Pa., with victory for the last named,  
athletic field in the country. It was the gift of Marshall Field to the Unive



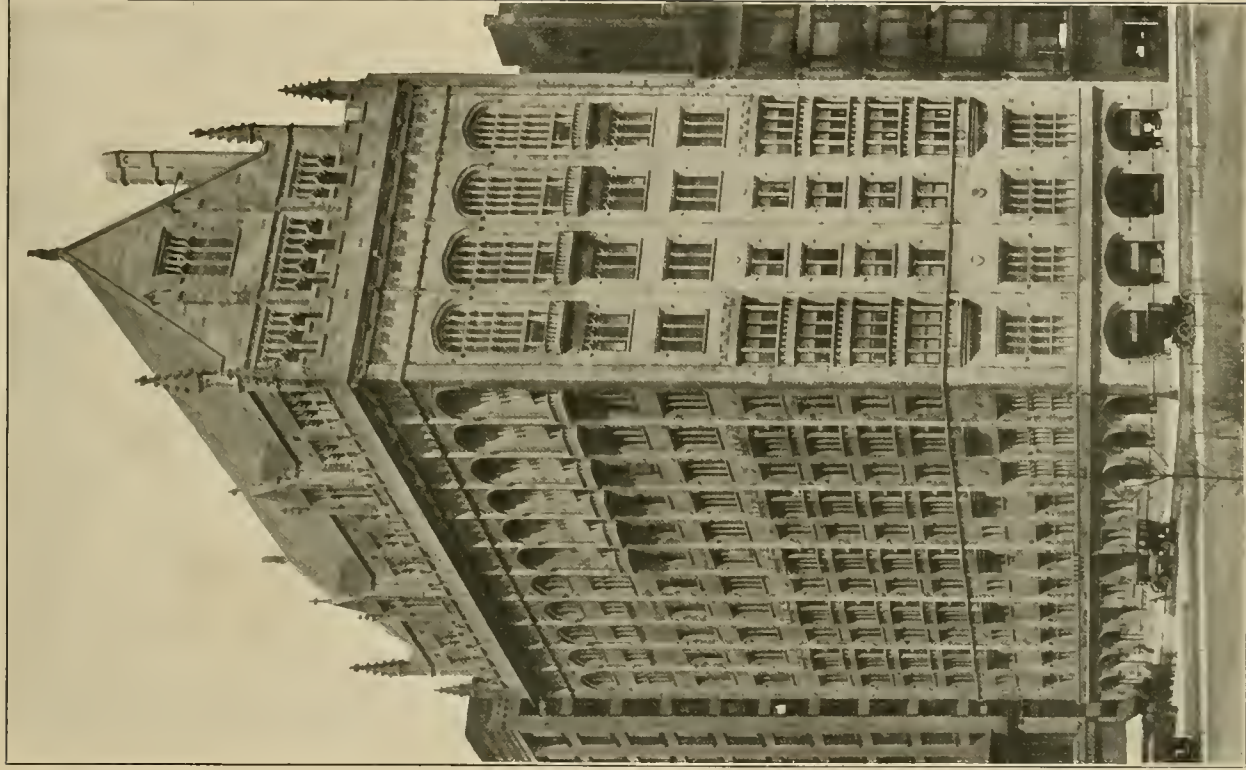
FOOTBALL GAME.

"Marshall field" at the University of Chicago, in 1907, between the University team and the Chicago team. Attendance was record breaking. "Marshall field" is recognized as the finest football field in Chicago. Many notable football games are played here each year.



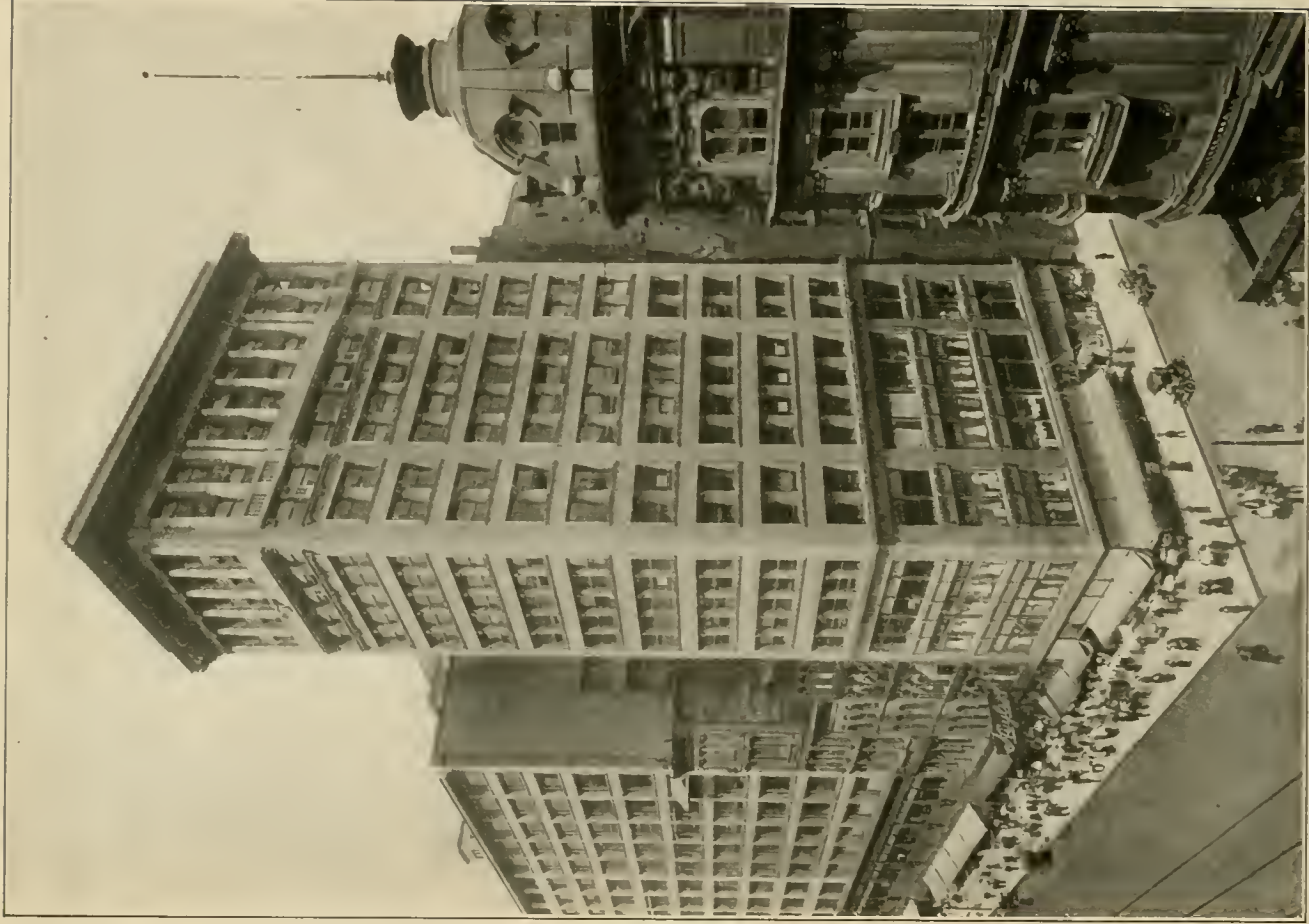
SOUTH WATER STREET.

Running along the Chicago River from Wabash Avenue to Market Street, is a center for the trade in provisions, fruit, etc.



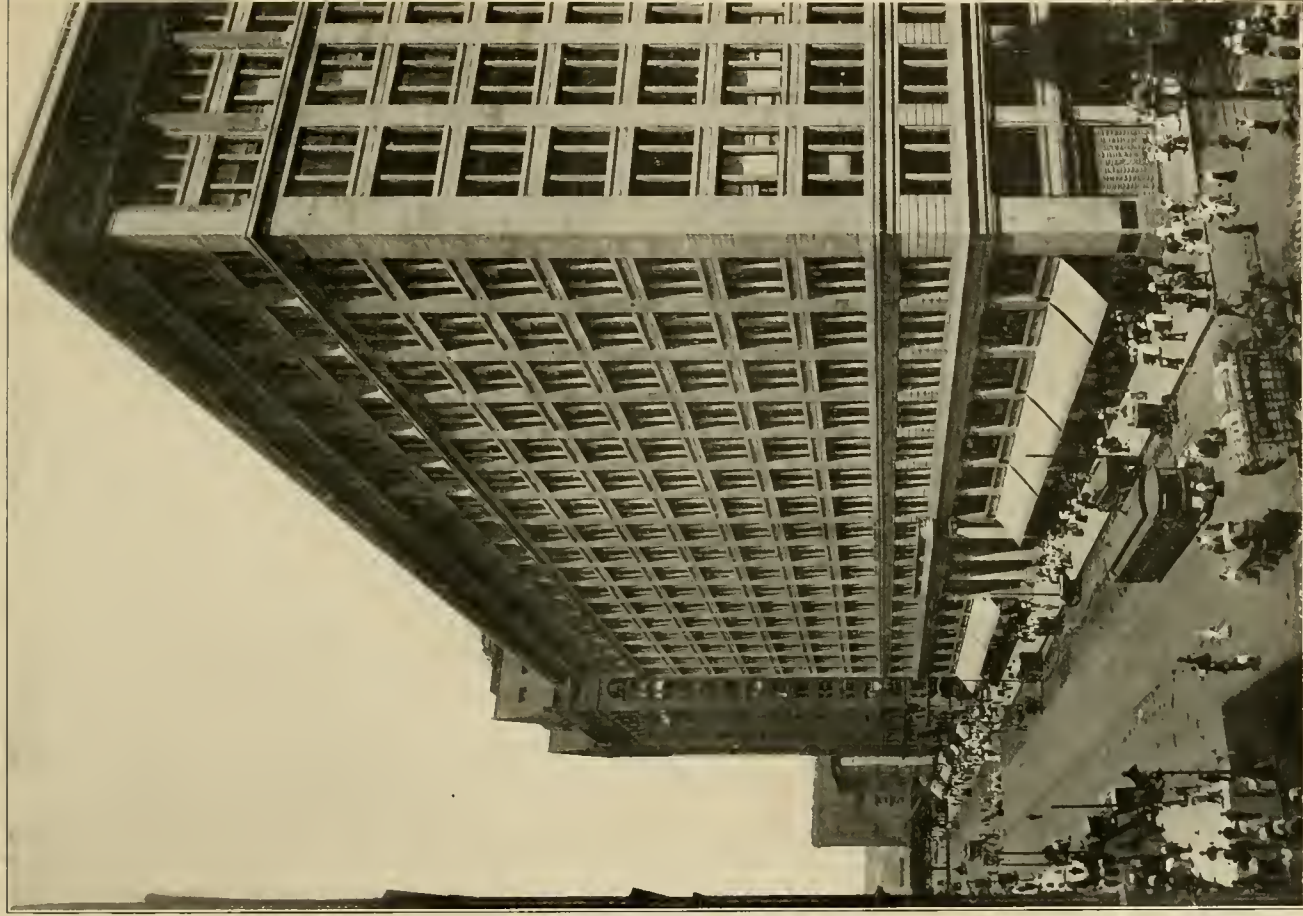
#### UNIVERSITY CLUB

Northwest corner Monroe Street and Michigan Boulevard. A stately Bedford stone structure of distinctive Gothic architecture and one of the handsomest in the city. More than \$1,000,000 was expended upon the building and fittings, and \$1,000,000 for the ground.

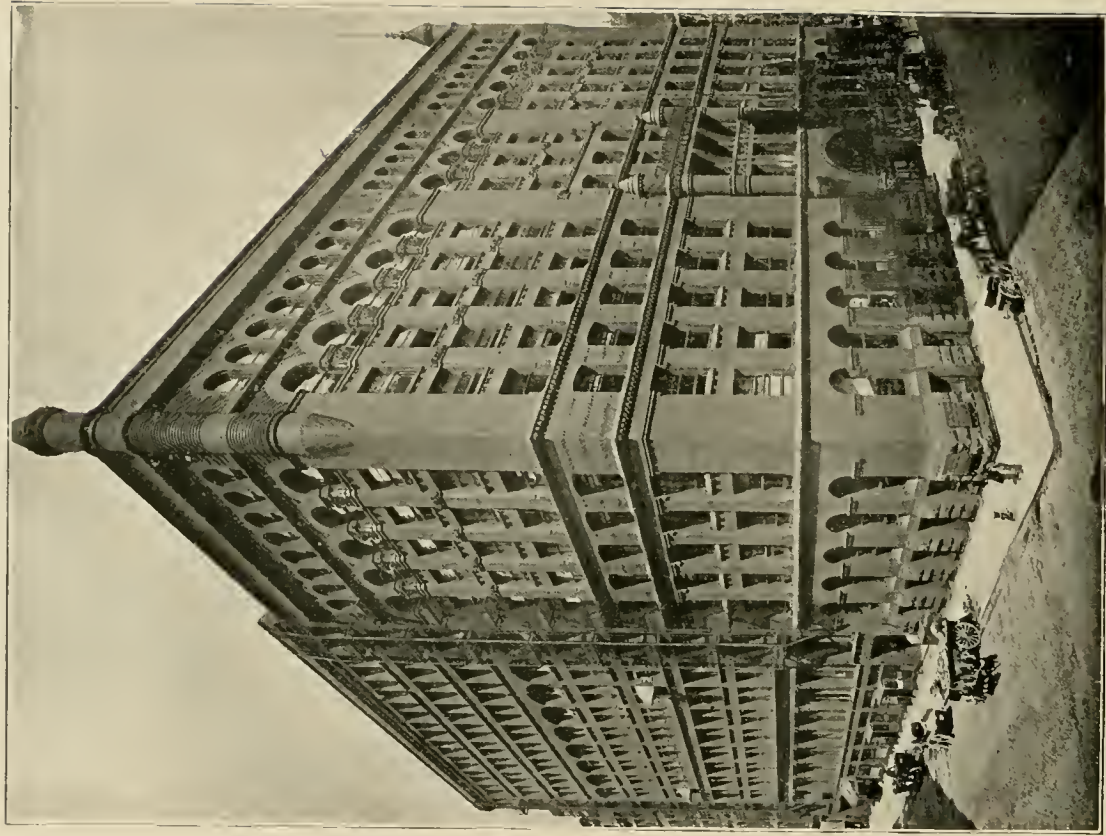


THE MENTOR BUILDING,  
Northeast corner Monroe and State streets. It is seventeen stories high and was completed  
in 1907. Cost, \$1,000,000.

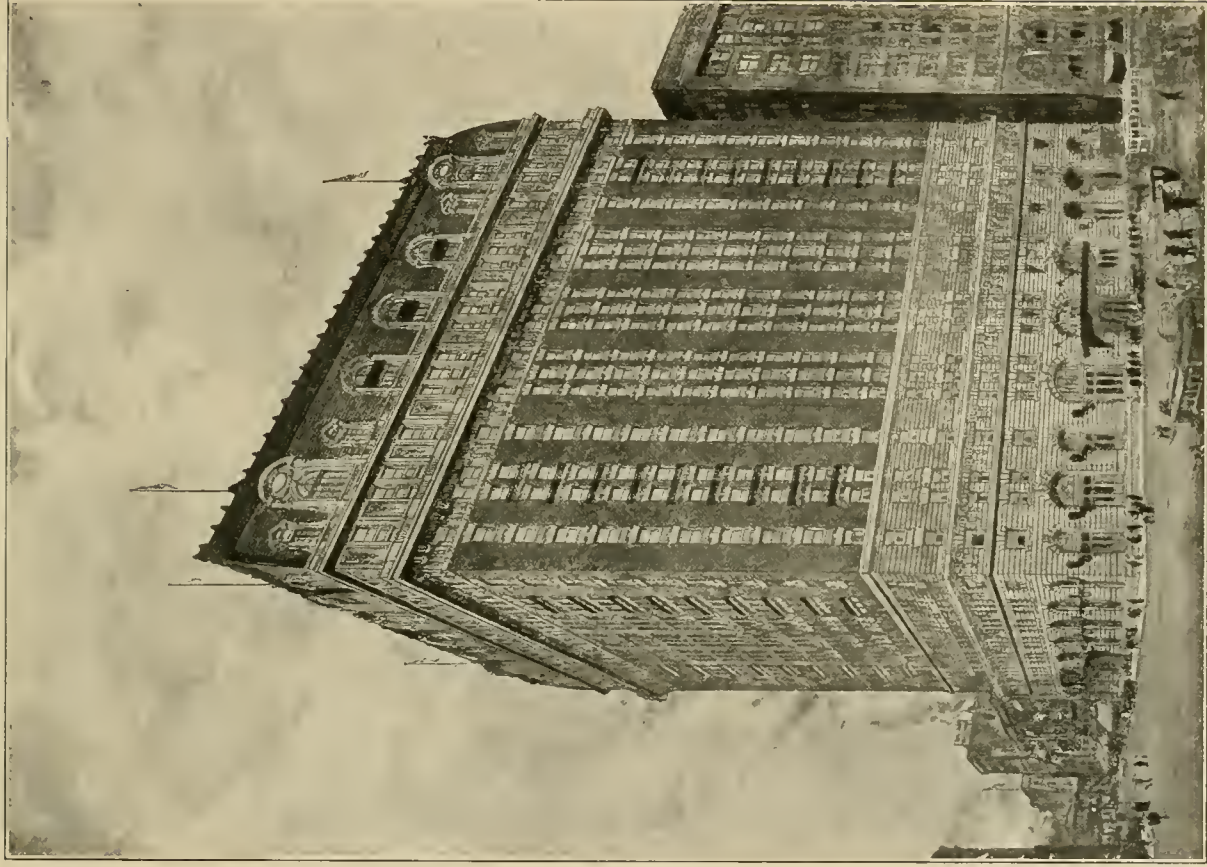




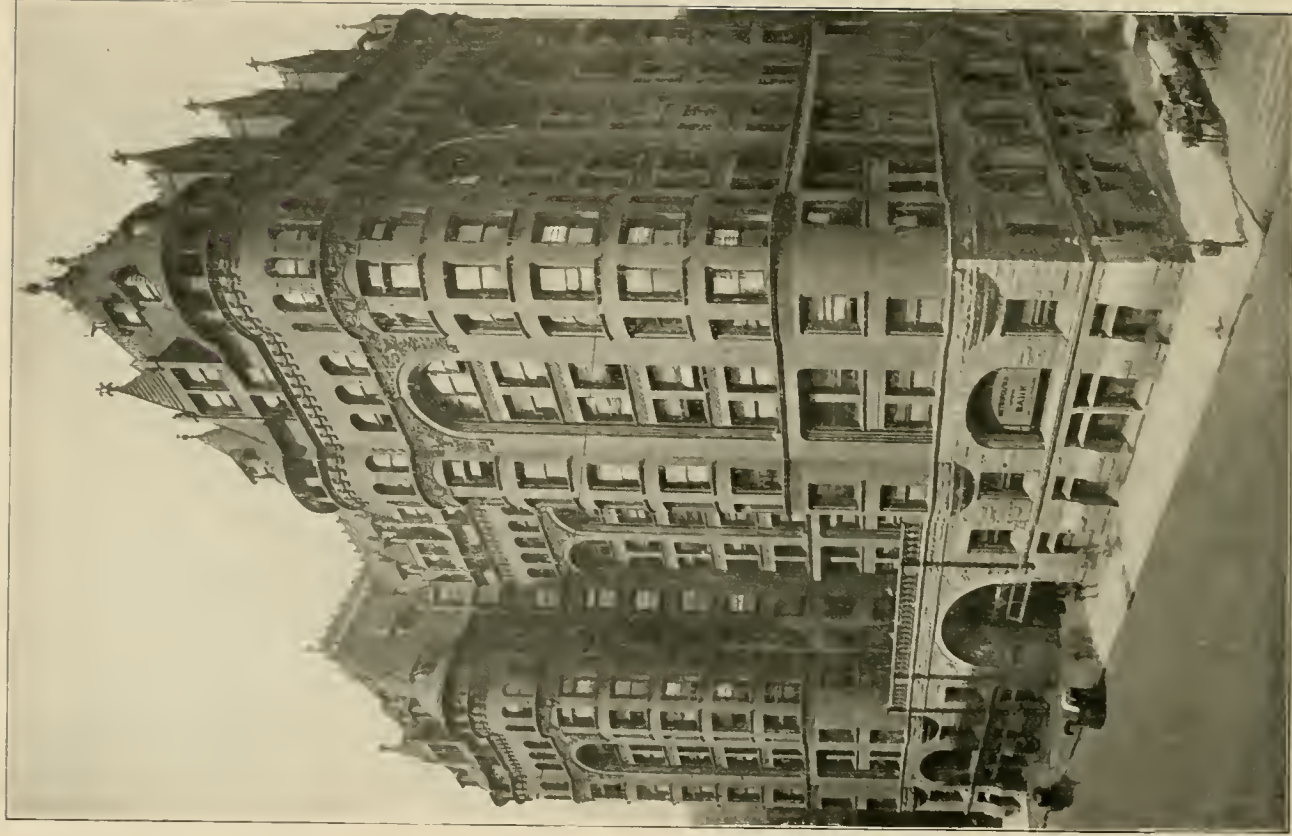
ONE OF CHICAGO'S MOST POPULAR CORNERS.  
A section of State Street, looking north from Washington Street. In the foreground is seen the great retail house of Marshall Field & Company, which occupies the entire block, and across Randolph Street to the left, the Masonic Temple, the highest building in the city.



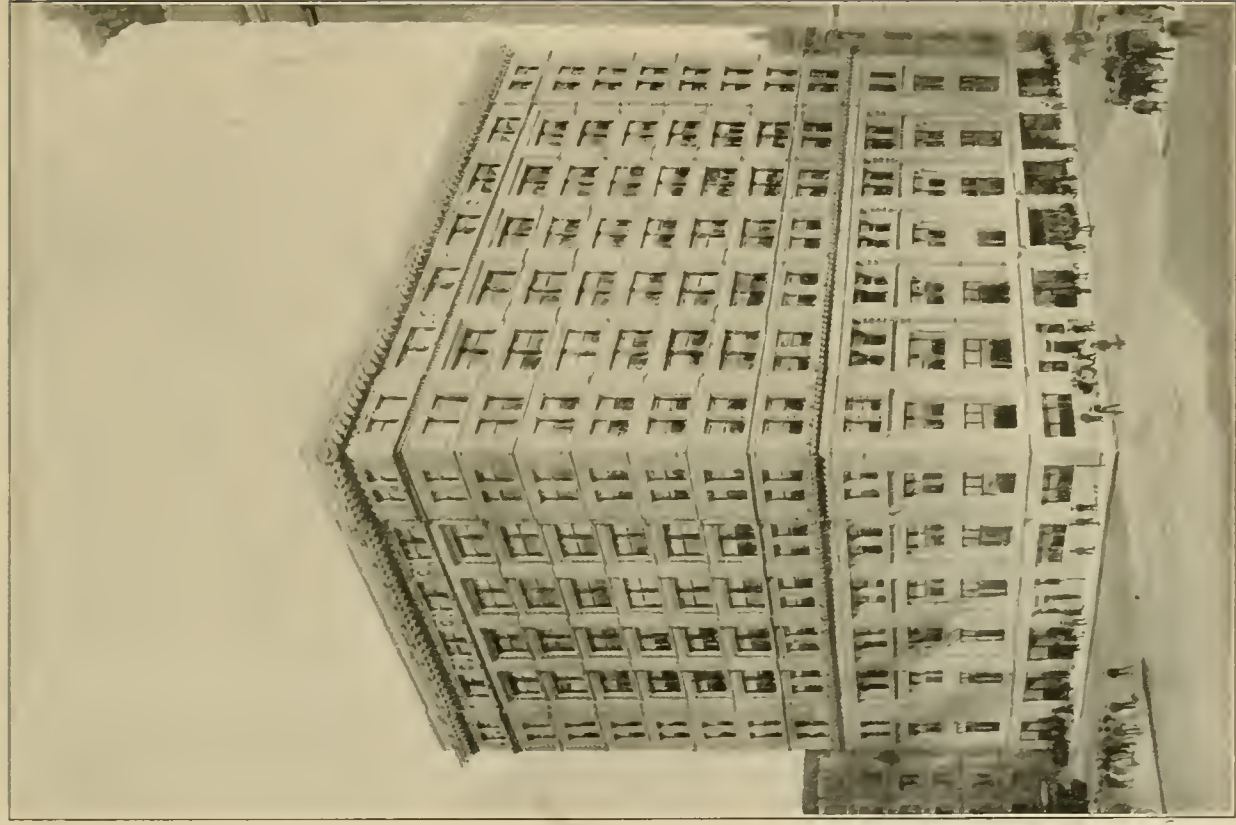
THE CONTINENTAL NATIONAL BANK BUILDING,  
Facing Quincy, Adams, and La Salle streets, showing the Quincy street entrance of the  
Rand-McNally Building.



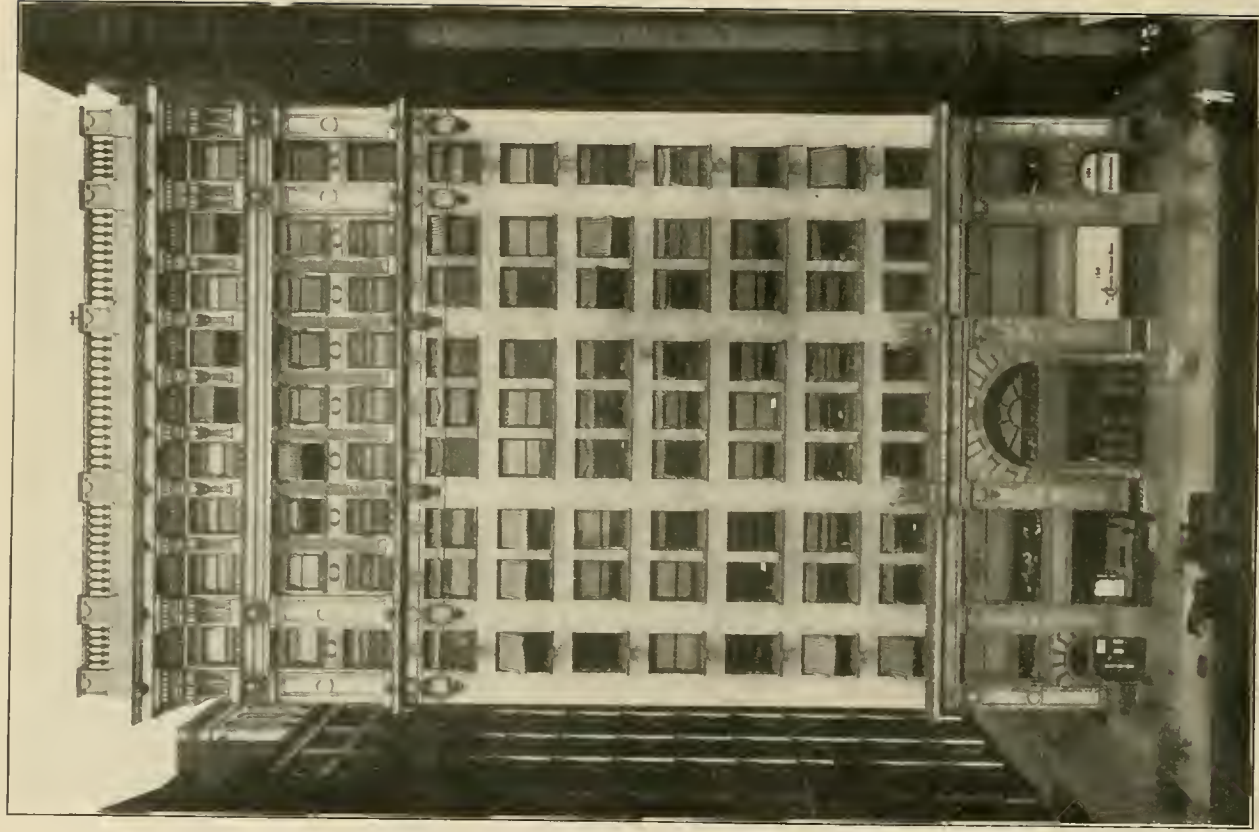
THE NEW LA SALLE HOTEL,  
Located at the corner of Madison and La Salle streets.



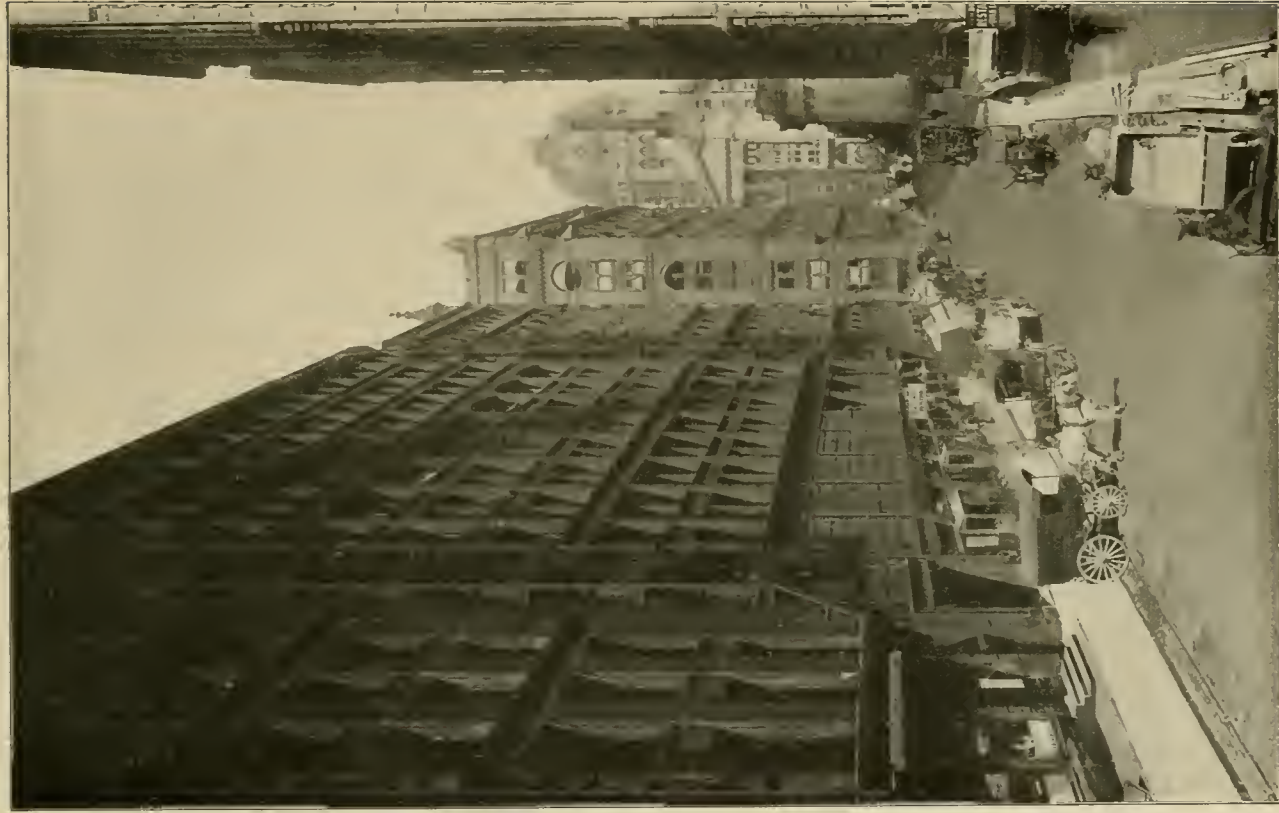
Or, briefly, "The Temple," is a twelve-story structure, erected by the Woman's Christian Temperance Union in 1890. It is located at La Salle and Monroe streets.



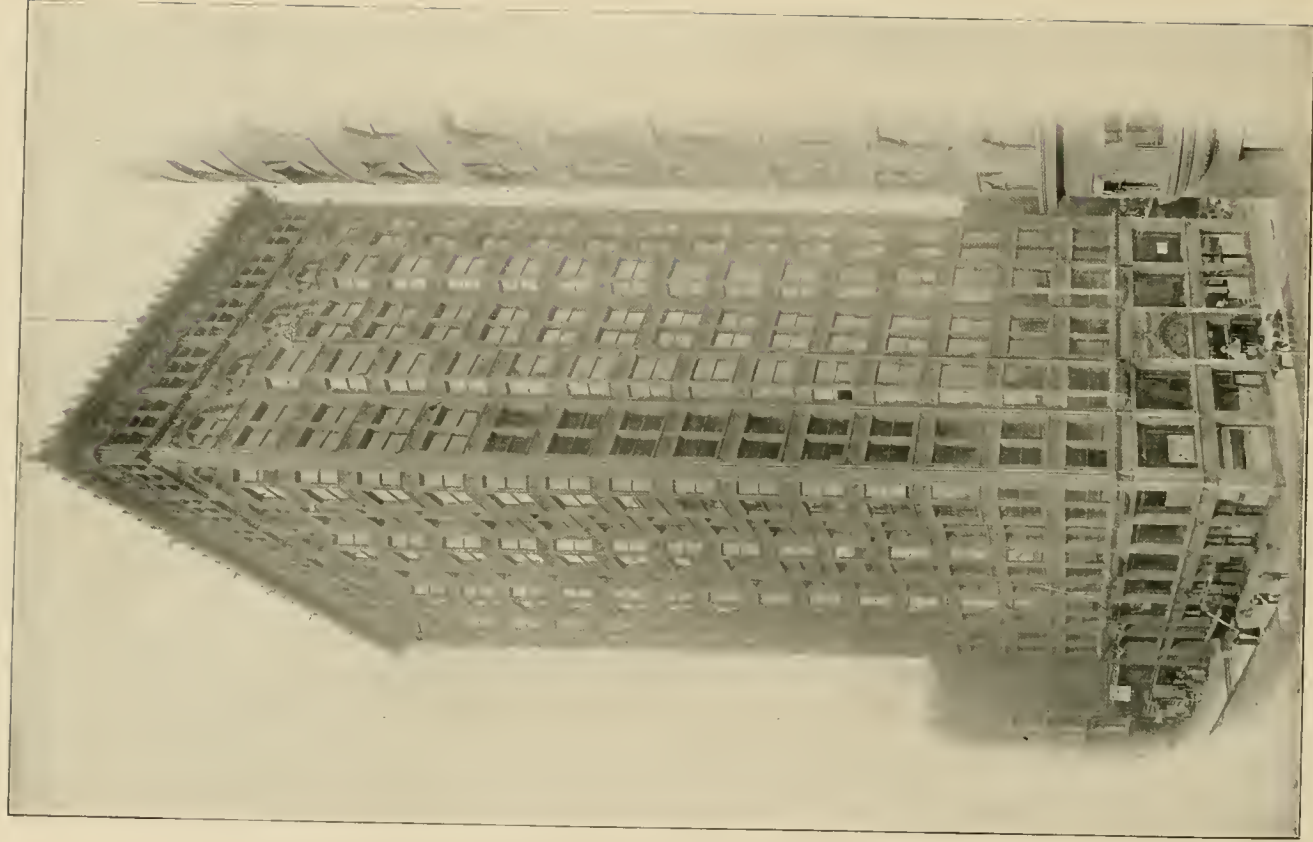
THE CHICAGO TRIBUNE BUILDING.  
Corner of Madison and Dearborn streets.



THE NATIONAL LIFE BUILDING  
Home Office Building of the National Life Insurance Company of the  
United States of America.



QUINCY STREET, LOOKING EAST FROM FIFTH AVENUE.  
The Rand-McNally Building is shown on the left, and the dome of the  
new Post Office Building in the distance.



THE FISHER BUILDING,  
Corner of Van Buren and Dearborn streets.





THE NEW YORK LIFE BUILDING,  
Northeast corner La Salle and Monroe streets. It is fourteen stories high and was erected  
in 1898. It is used as a general office building.



GERMANIA CLUB,  
Corner of North Clark Street and Germania Place.



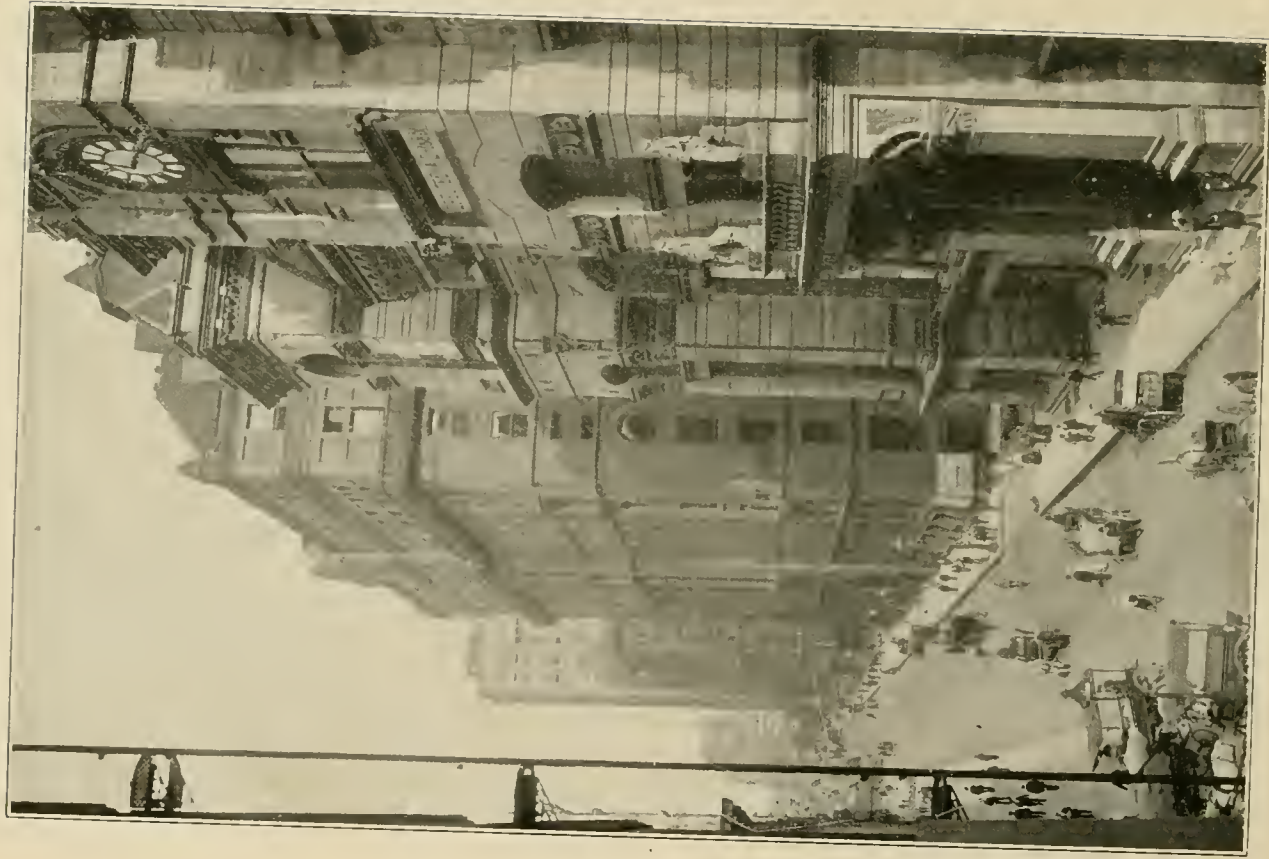
THE ILLINOIS THEATRE,  
Jackson Boulevard, between Wabash and Michigan avenues.



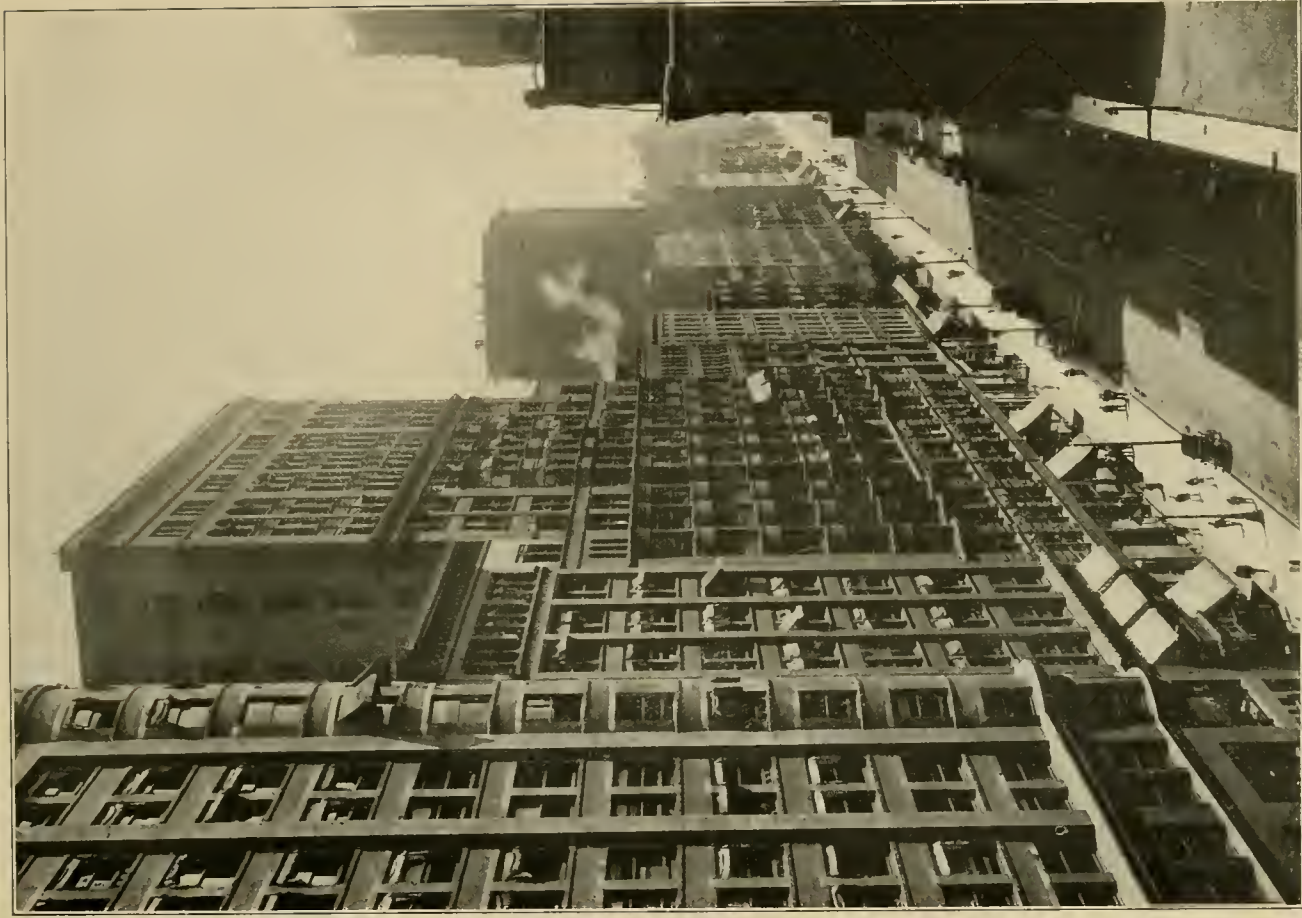
STATE STREET, NORTH FROM MADISON.



A CORNER IN THE LOOP DISTRICT,  
Monroe Street and Wabash Avenue looking north, showing the east side of the elevated loop and a section of the Wabash Avenue  
retail district.

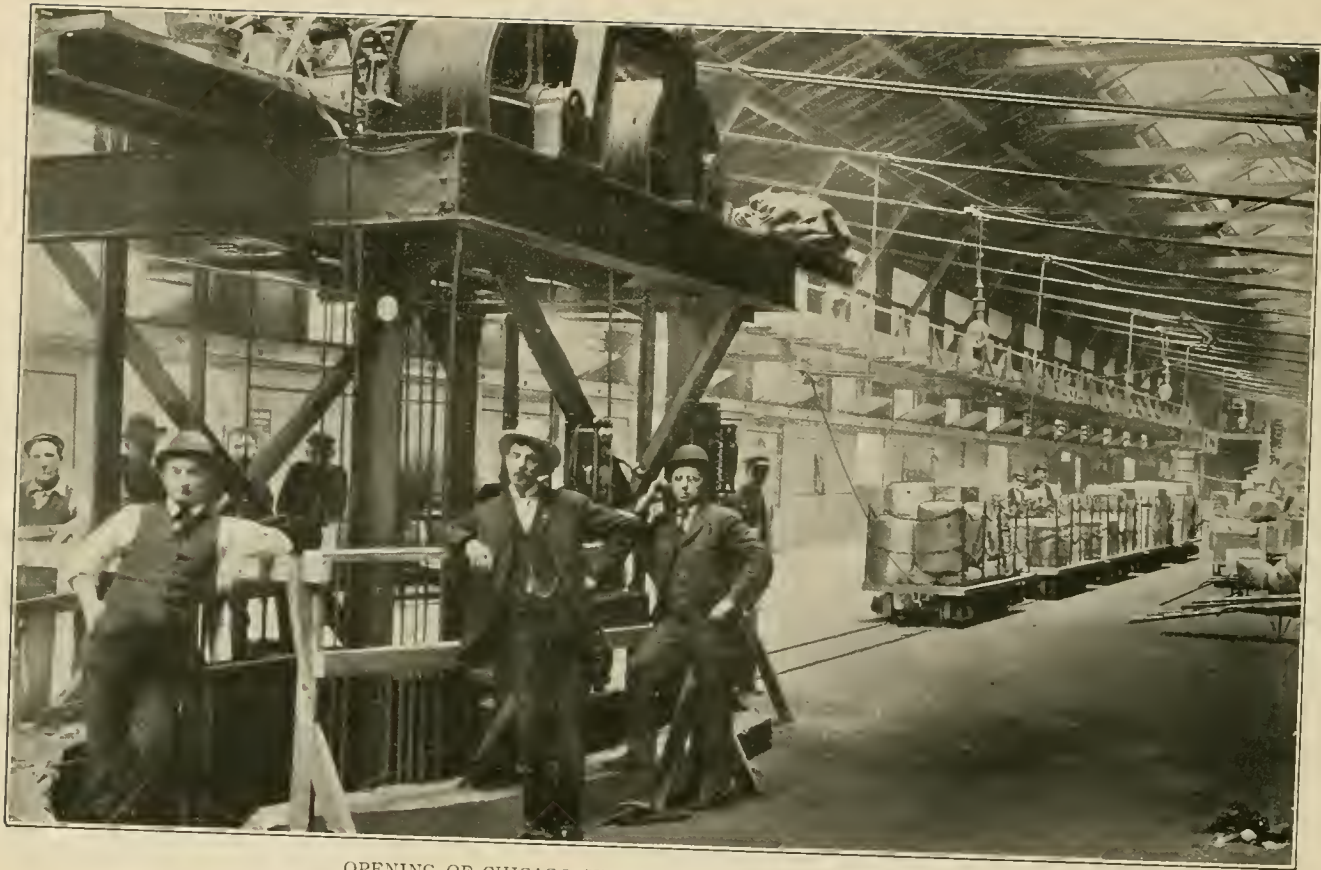


Western Union Building,  
JACKSON BOULEVARD, LOOKING EAST FROM SHERMAN STREET  
Board of Trade.



ONE OF THE CITY CANONS,

Dearborn Street, looking south from Van Buren Street. In the foreground appears a part of the Old Colony Building. The next tall structure is the Manhattan, and still farther along the street is seen the Ellsworth.



OPENING OF CHICAGO SUBWAY FOR FREIGHT TRAFFIC  
In the Chicago, Milwaukee & St. Paul freight house, where the first train operated by the Illinois Tunnel Company was received.



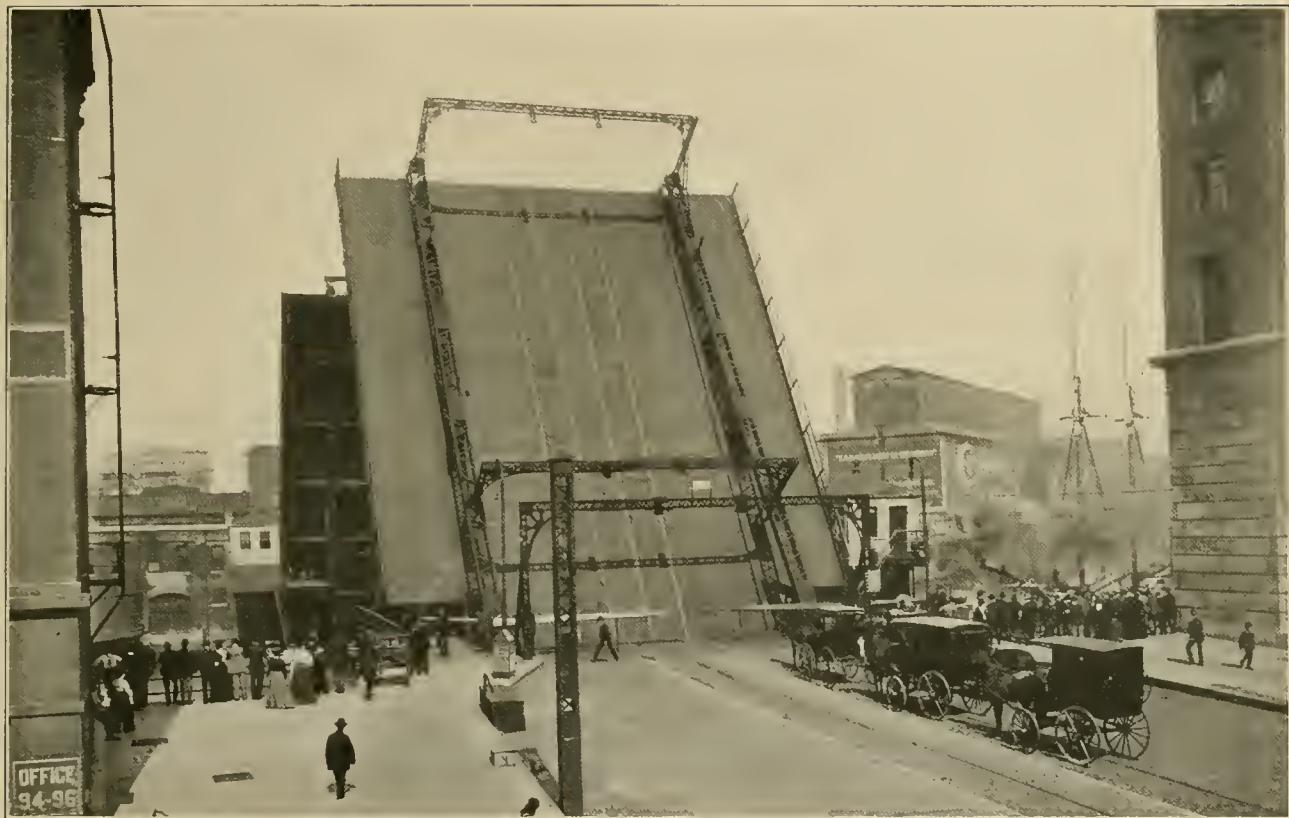


A LOADED FREIGHT TRAIN IN THE ILLINOIS TUNNEL SYSTEM.

This system connects with the basements of commercial houses, where it delivers freight, thus avoiding transportation through the crowded city streets. It passes under the Chicago River eleven times.

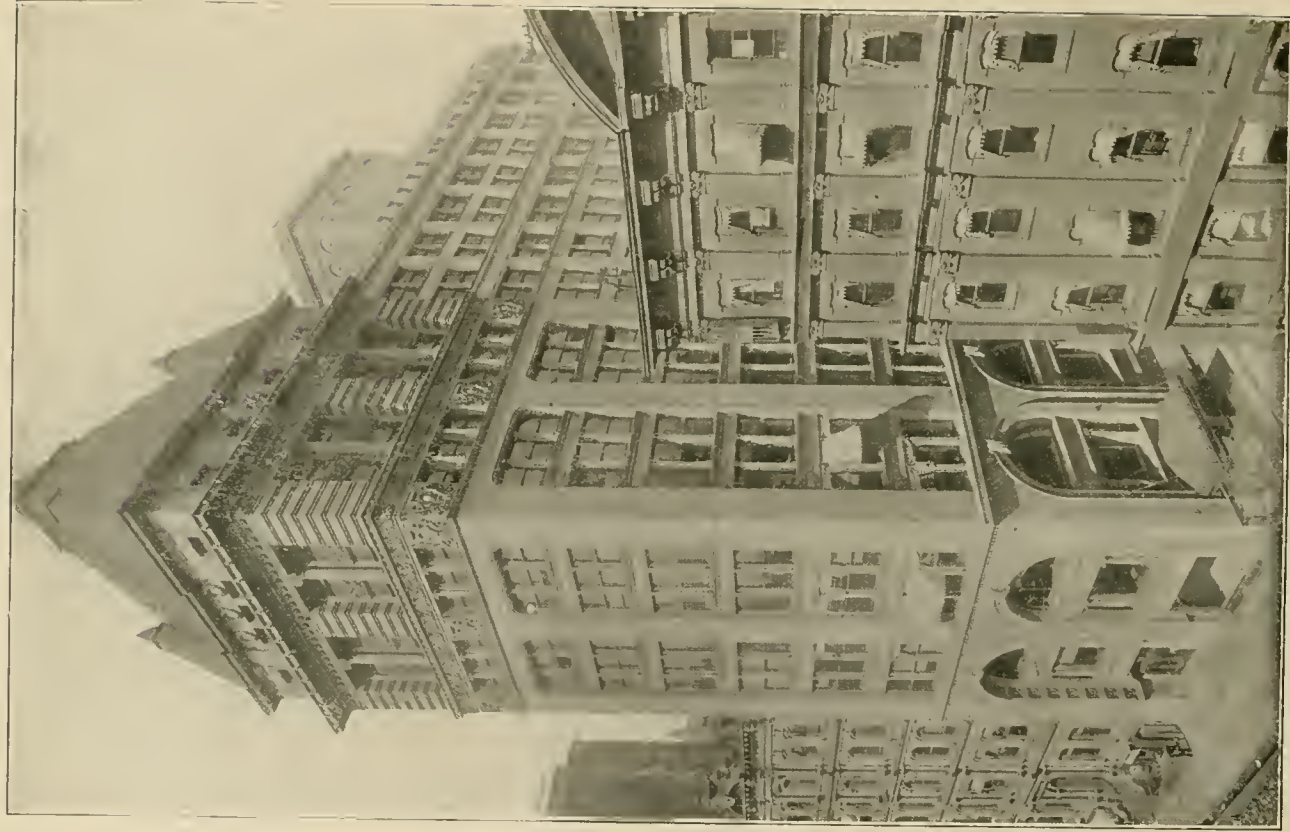


VIEW OF MICHIGAN AVENUE, LOOKING SOUTH FROM TWENTY-NINTH STREET.



THE MEETING OF THE WAYS.

Looking north from South Water Street. One of the "Jack-knife" bridges opened for a boat to pass through at State Street.



THE ASSOCIATION BUILDING.

Erected under the auspices of the Young Men's Christian Association, is located at  
153-155 La Salle Street.



THE MONADNOCK BUILDING  
Occupies the entire block between Van Buren Street and Jackson Boulevard  
on Dearborn Street.

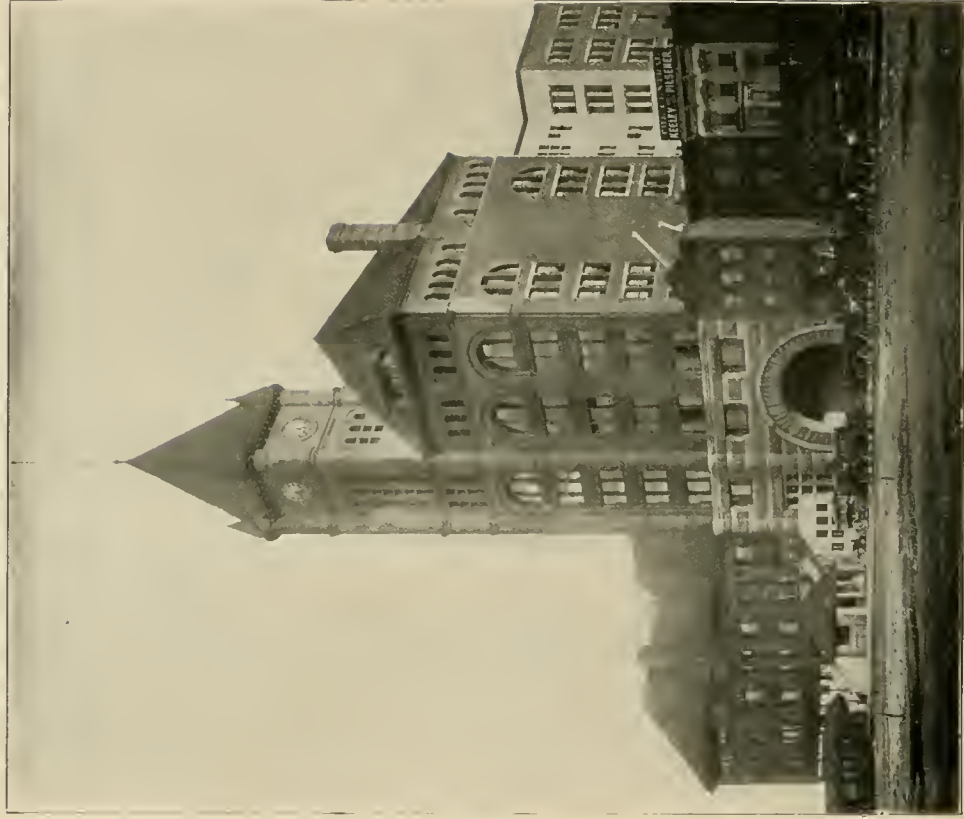


CHICAGO AND NORTH WESTERN RAILWAY PASSENGER STATION,  
Corner of Wells and Kinzie streets.



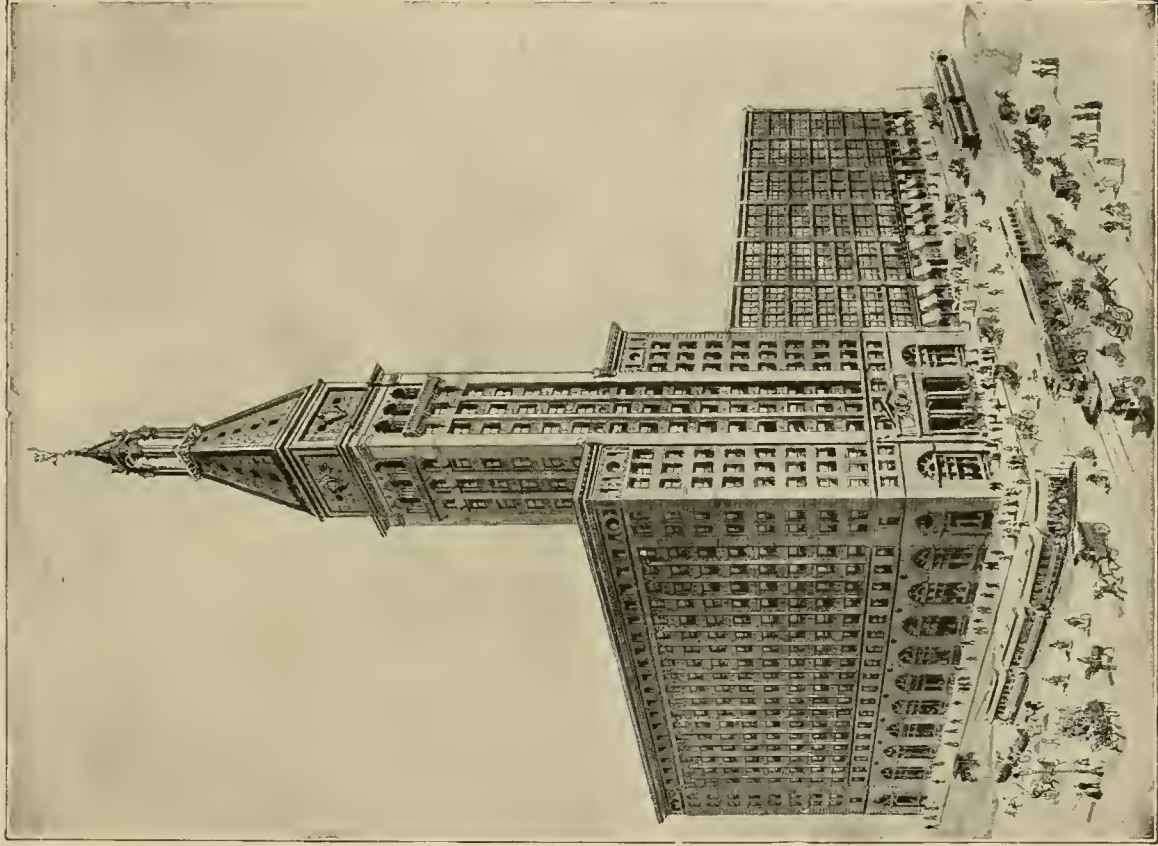
COPYRIGHTED 1902, BY A. J. SMITH, C. P. & T.  
LAKE SHORE & MICHIGAN SOUTHERN RY., CHICAGO.

LA SALLE STREET STATION, SHERMAN AND VAN BUREN STREETS.  
Chicago, Rock Island & Pacific Railway. Lake Shore & Michigan Southern Railway.

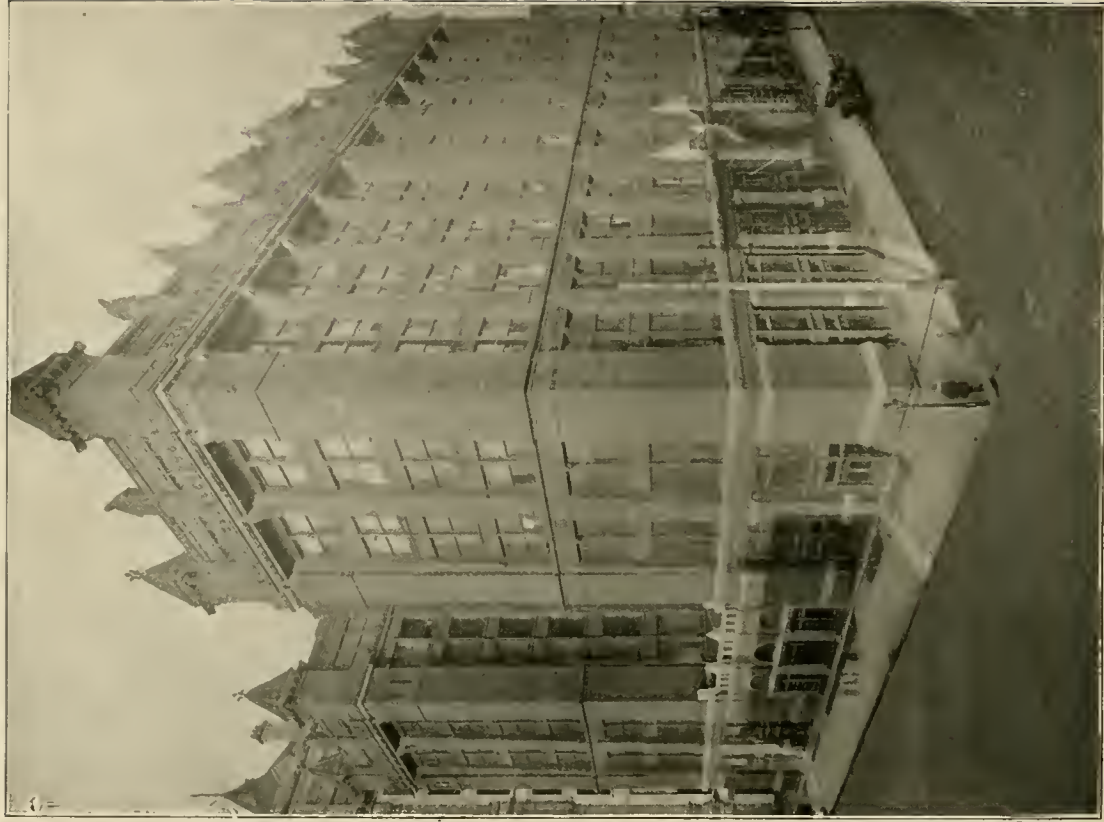


THE ILLINOIS CENTRAL RAILROAD STATION  
Is situated on the Lake Front, between Park Row and Twelfth Street, overlooking  
Grant Park to the north.

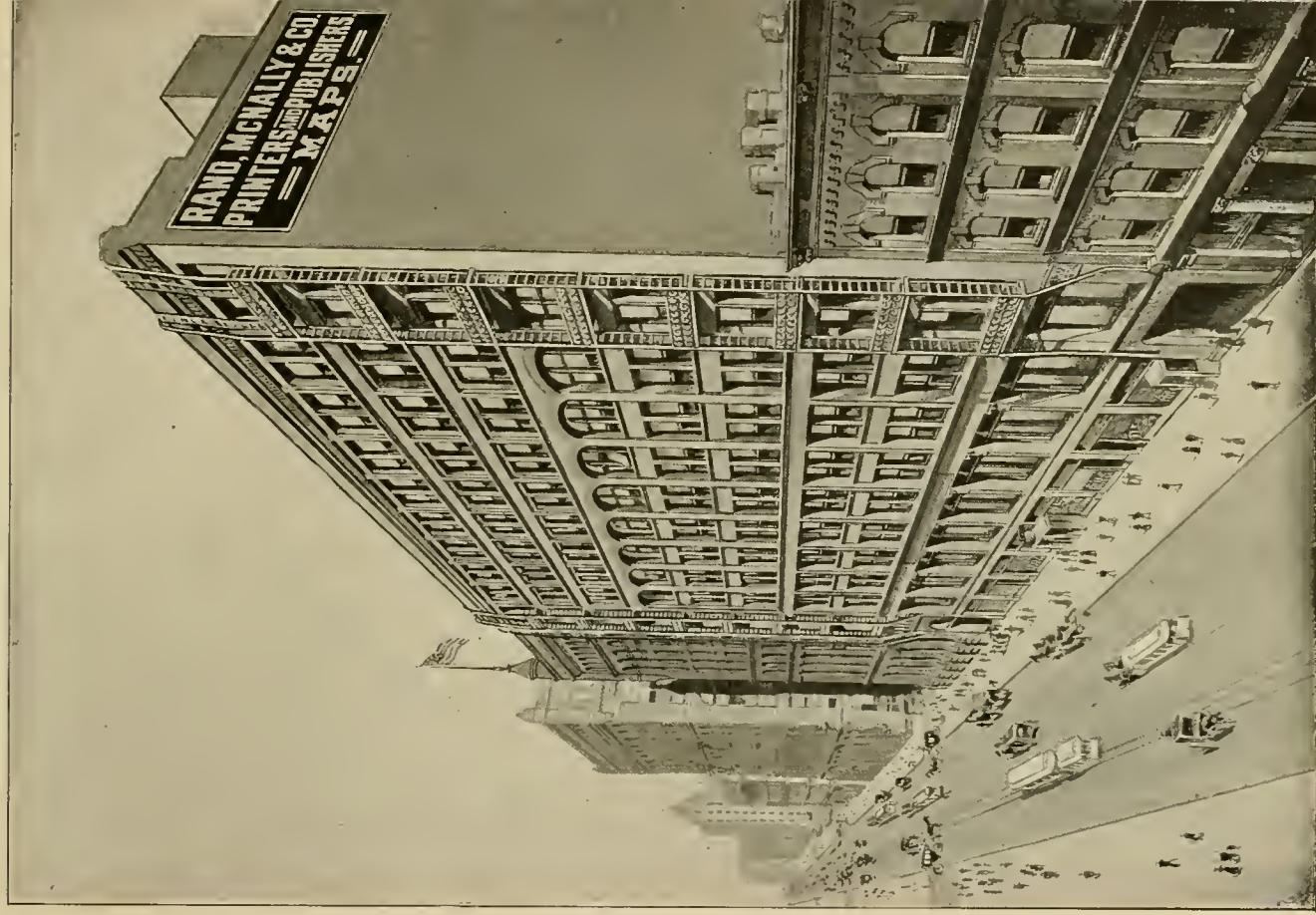




MONTGOMERY WARD & CO.'S NEW BUILDING,  
Corner of Michigan Avenue and Madison Street.



**THE POSTAL TELEGRAPH, FORMERLY THE RIALTO BUILDING,**  
Located on Van Buren Street, near the Board of Trade, is the center of firms dealing in grain  
stock, especially wheat, and also contains the main offices of the Postal Telegraph Company.



THE RAND-McNALLY BUILDING,  
Nos. 166-174 Adams Street.



A VIEW OF THE

This spacious ball ground, situated at Polk and Lincoln streets, is the property of  
The illustration shows the park during one of the closely-contested games bet  
enjoys the distinction of being the greatest baseball city in the co



**INSIDE BALL PARK.**

onal League, owners of the team known in base ball vernacular as the "Cubs."  
"Cubs" and the New York "Giants" during the summer of 1908. Chicago  
nd has several other fine ball parks, in different parts of the city.



RESIDENCE OF MRS. POTTER PALMER,  
No. 100 Lake Shore Drive.



RESIDENCE OF MRS. GEORGE M. PULLMAN,  
Corner of Prairie Avenue and Eighteenth Street.



STATUE OF LINNE, LINCOLN PARK.





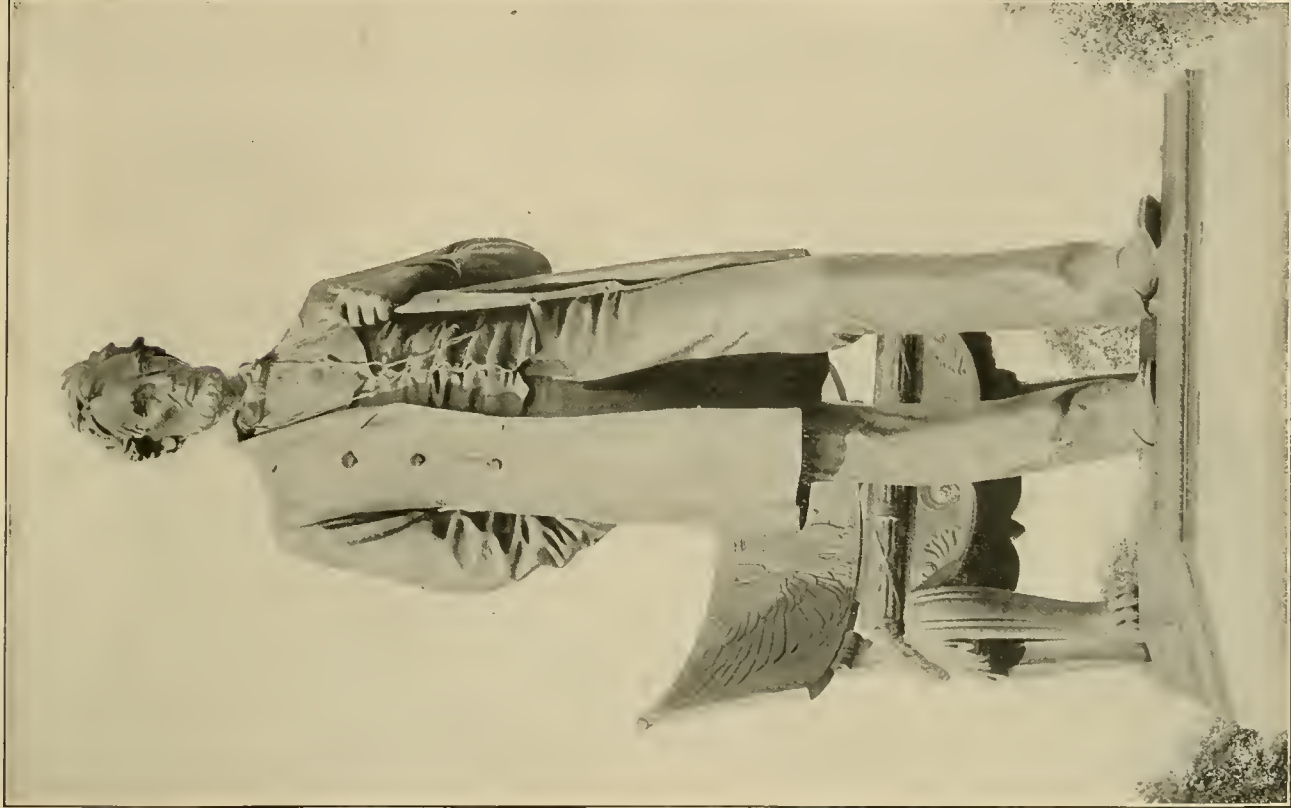
THE HUMBOLDT MONUMENT, HUMBOLDT PARK.



THE WASHINGTON MONUMENT,  
Washington Park.



STATUE OF GEN. JOHN A. LOGAN,  
Grant Park, Lake Front.



THE LINCOLN STATUE, LINCOLN PARK.

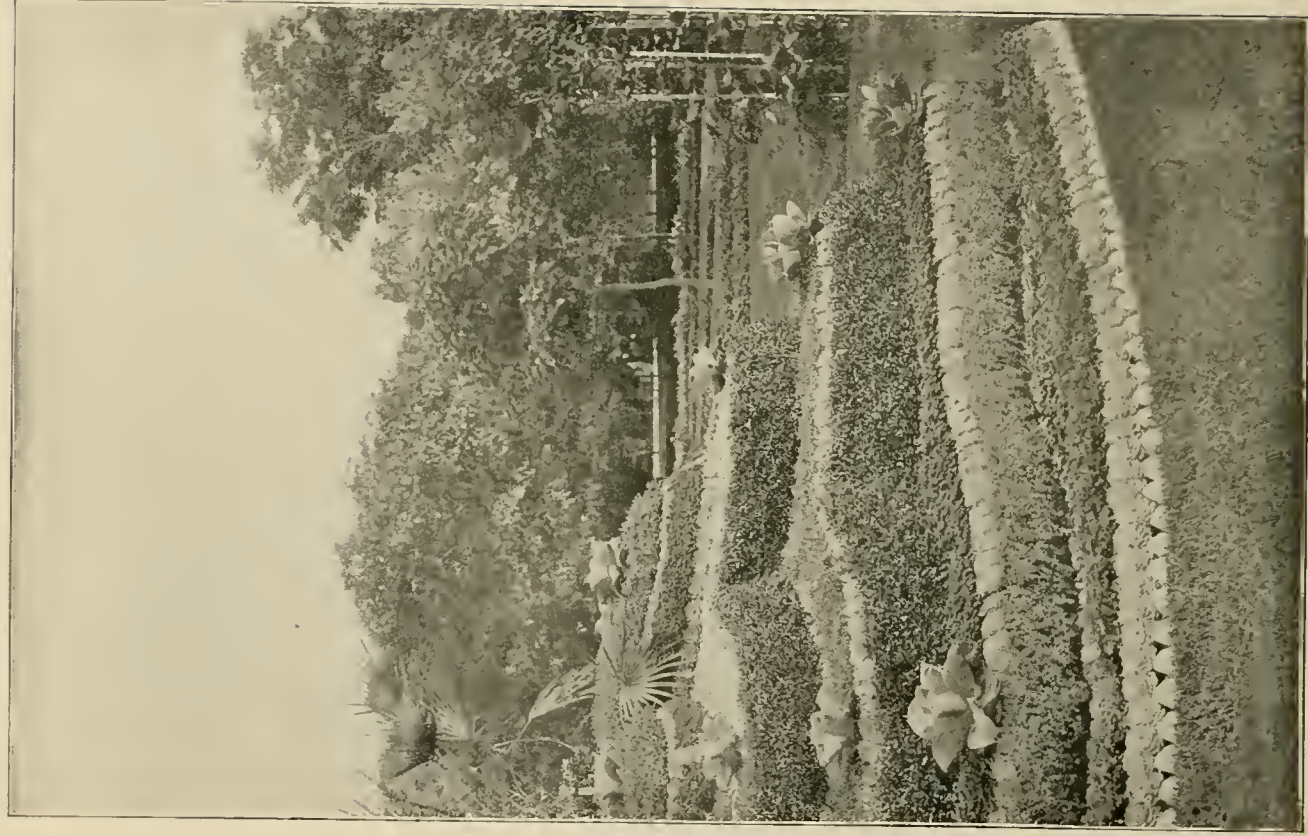


THE GRANT MONUMENT, LINCOLN PARK.



**THE MCKINLEY MONUMENT.**

This handsome tribute to President McKinley stands at the entrance of the park named in his honor. This park, one of the most attractive of the South Side neighborhood parks, is located on the north side of 39th Street between Western Avenue and Robey Street.



TERRACE OF FLOWERS IN LINCOLN PARK.



A LILY POND, WASHINGTON PARK.



A SECTION OF THE BEACH AT JACKSON PARK.

In the distance at the left is the Casino Pier, where the lake traffic was landed during the World's Fair. In the center, the German Building. At the right is shown a small portion of the broad driveway skirting the lake shore.





BOATING IN LINCOLN PARK.



ELK IN LINCOLN PARK.



SHEEP GRAZING IN WASHINGTON PARK.

A pastoral scene in one of the largest and most attractive parks included in the South Park System.



GAME OF "CURLING," WASHINGTON PARK.



WATER COURTS, PAVILION, AND BOAT LANDING IN GARFIELD PARK.  
A new and artistic feature in the West Park System. Completed in 1907.



#### THE DREXEL FOUNTAIN

Was donated to the city of Chicago in commemoration of one of Chicago's famous citizens. Its height is 35 feet, and the base is surrounded by a basin 22 feet in diameter. The structure cost \$40,000.



THE INDIAN MONUMENT, LINCOLN PARK.



VIEW IN LINCOLN PARK.





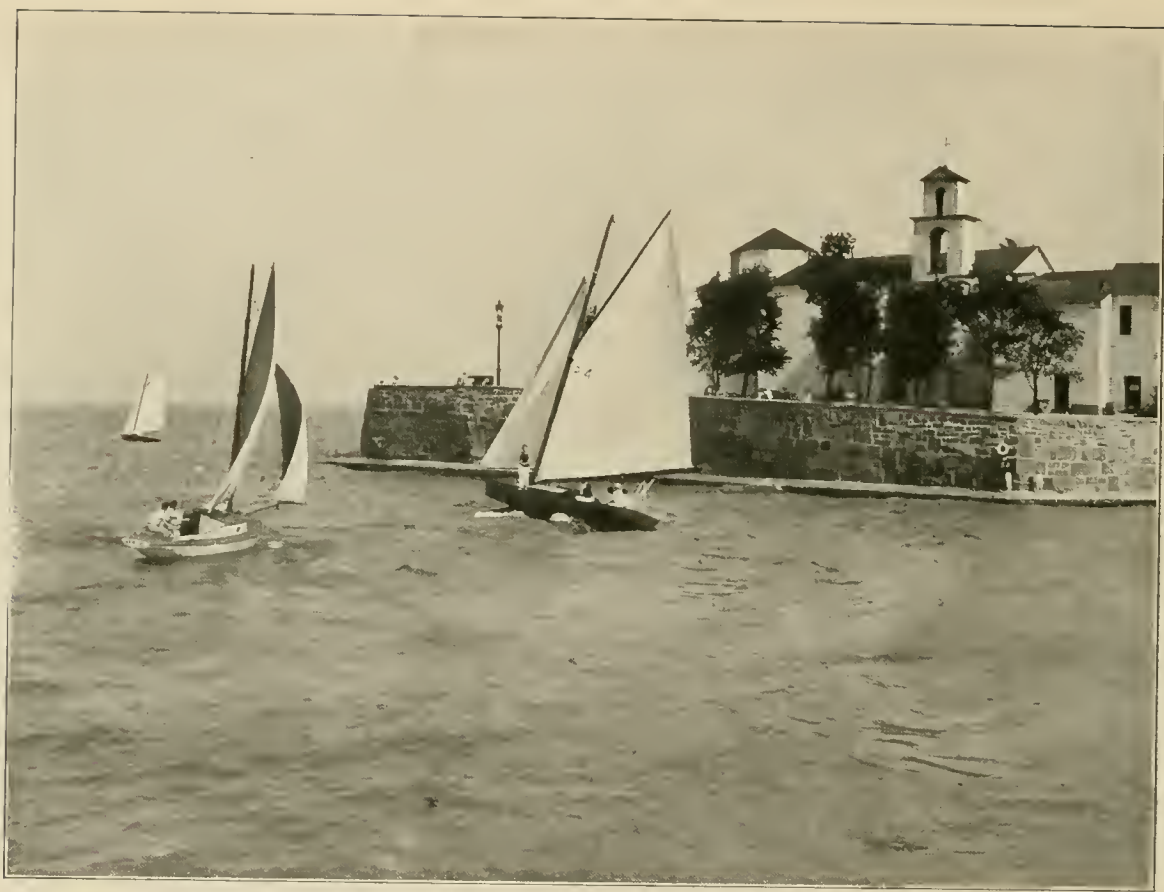
FISHING ON THE BEACH. LINCOLN PARK.



THE BOAT HOUSE, LINCOLN PARK.

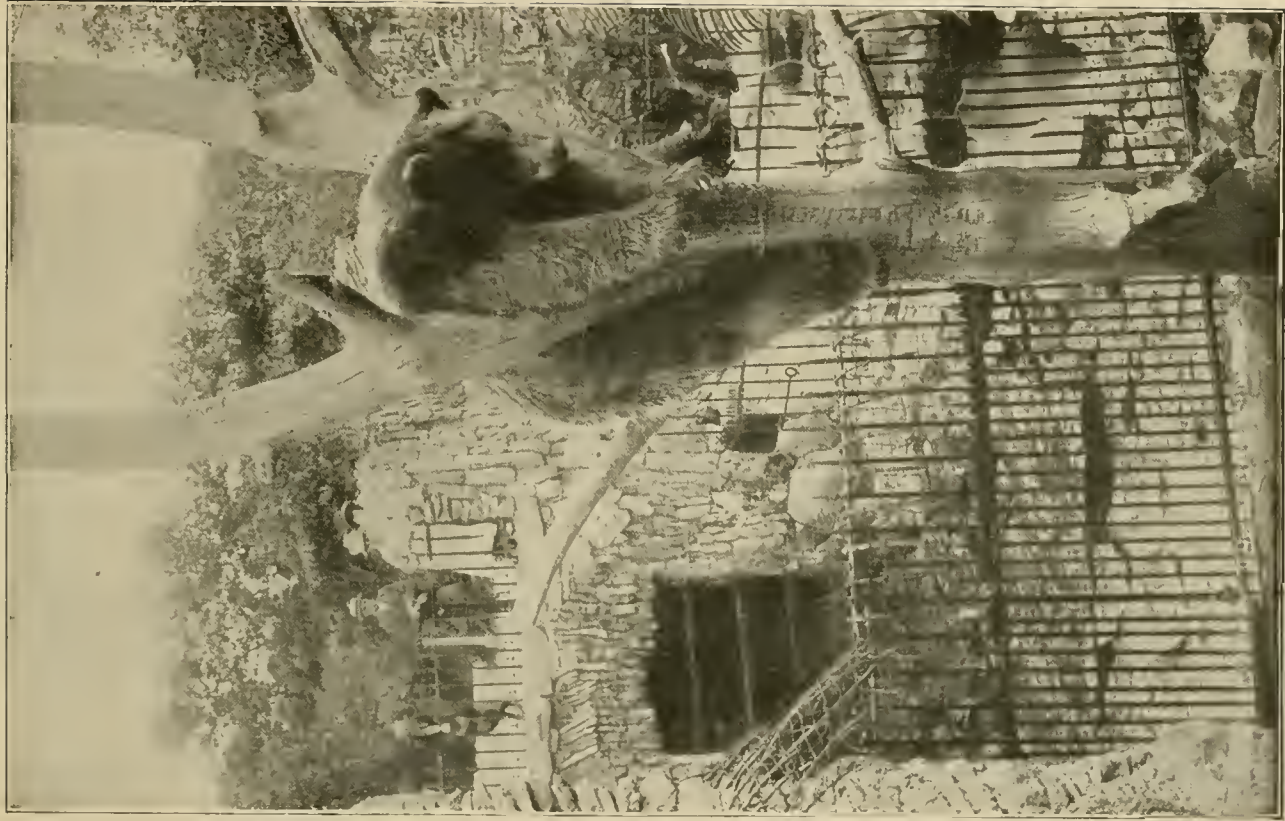


VIEW IN DOUGLAS PARK.



LAKE MICHIGAN AND THE JACKSON PARK SANITARIUM, JACKSON PARK.

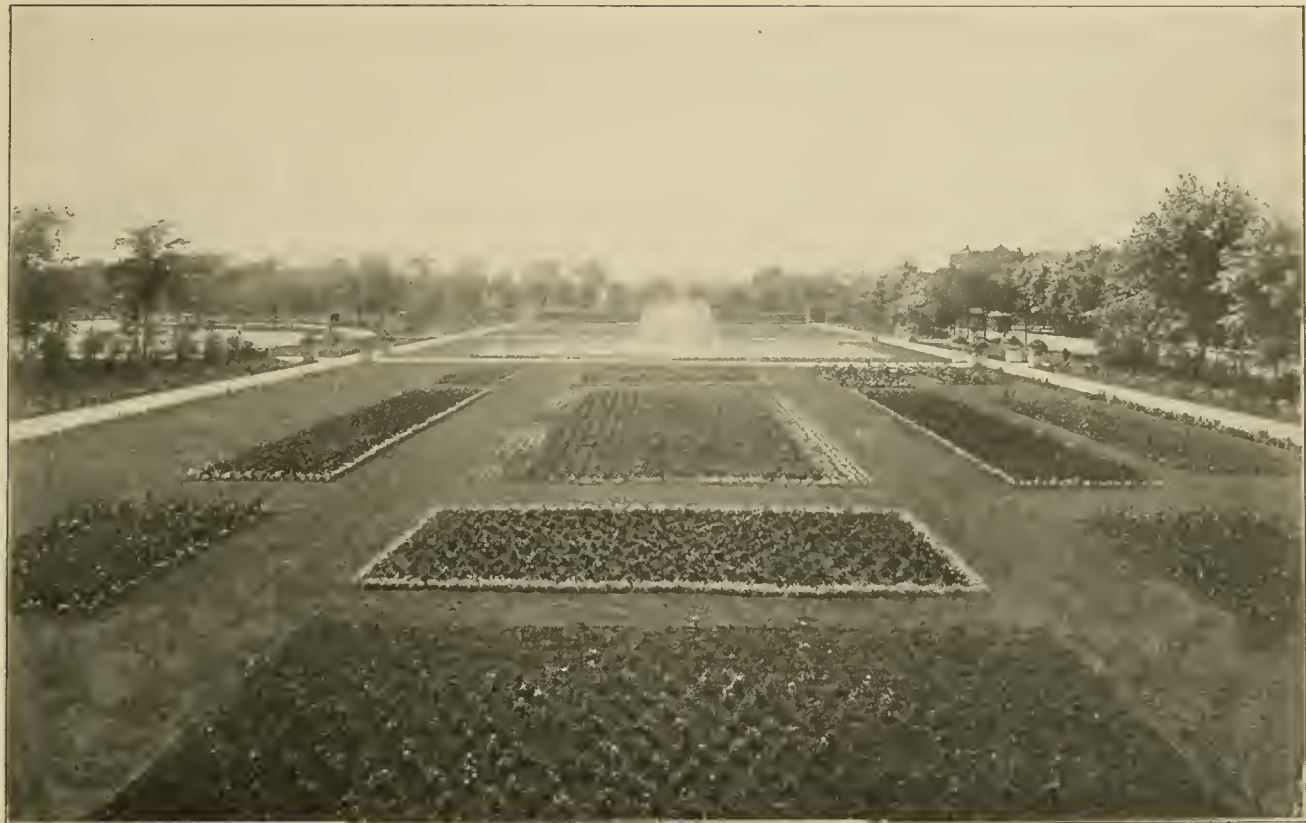
This building, a reproduction of the historical Spanish Convent, La Rabida, was erected for the World's Fair and is one of the few permanent structures left. It is used during the summer for the care of sick children. A physician and resident nurses are in attendance and regular reports are made to the Park Commissioners.



THE BEAR CAVE, LINCOLN PARK.



BAND STAND, GARFIELD PARK.



ARTISTIC FLOWER GARDEN IN GARFIELD PARK.

One of the new and attractive features recently added to this magnificent pleasure ground in the West Park System.



VIEW IN UNION PARK.





MEADOW AND PLAYGROUND IN WASHINGTON PARK, SOUTH PARK SYSTEM.



HUMBOLDT PARK STABLE.



REFECTORY, HUMBOLDT PARK.



FIELD MUSEUM OF NATURAL HISTORY, JACKSON PARK.



THE WADING POOL IN MARK WHITE SQUARE.  
A popular playground at Thirtieth and Halsted streets, South Side.



VIEW OF THE CHICAGO RIVER.



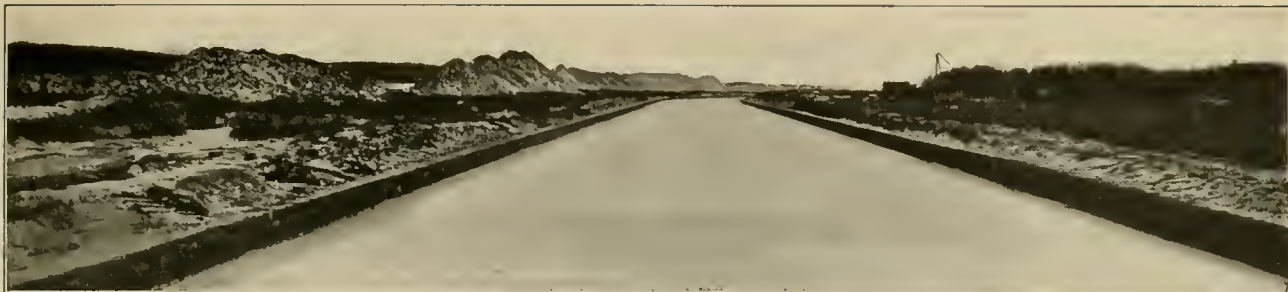
A "WHALEBACK" STEAMER ON LAKE MICHIGAN.



VIEW OF THE HARBOR.

The system of docks and landings on the Chicago and Calumet rivers extends over more than fifty miles.





#### VIEWS OF THE DRAINAGE CANAL.

Construction work was begun in 1892; completed in 1900. Total approximate cost, \$50,000,000. Upper view shows section where excavation 182 feet wide and 26 feet deep was made through 17 miles of solid rock. Lower view, section at Willow Springs; excavation 202 feet wide.



VIEW OF BEAR TRAP DAM OF THE DRAINAGE CANAL.

The Chicago Drainage Canal is one of the most stupendous undertakings ever carried out by the city of Chicago. It provides for the disposition of Chicago sewage through an artificial canal from Lake Michigan through Chicago to the nearest point on the Desplaines River. The picture shows the bear trap dam at Lockport looking up stream.



A VIEW OF THE CONTROLLING WORKS ON THE DRAINAGE CANAL.  
Bear trap dam at Lockport looking down stream.



VIEW IN UNION STOCK YARDS.



VIEW IN UNION STOCK YARDS.

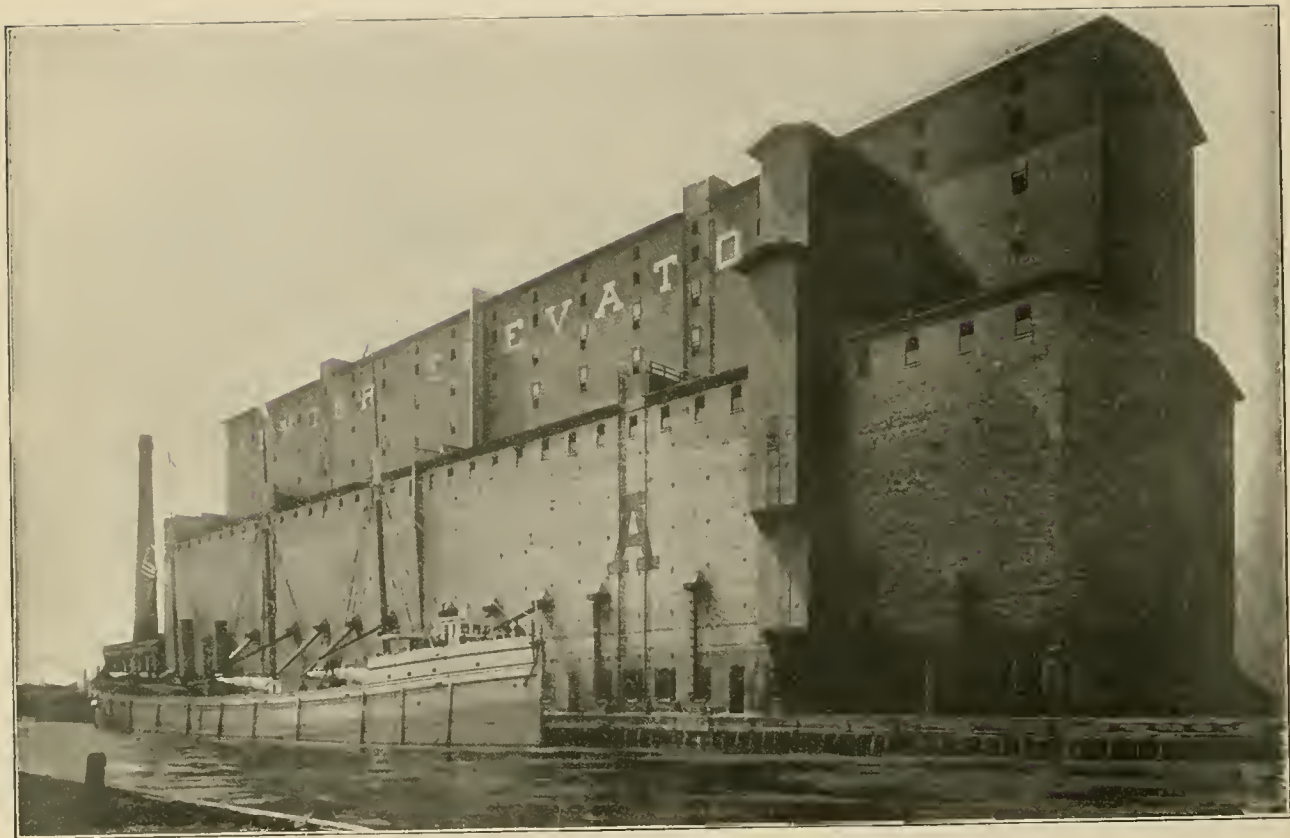


VIEW IN THE UNION STOCK YARDS.

The stock yards, South Halsted Street, are one of Chicago's gigantic business centers. Occupying, as they do, more than 400 acres of land, they connect all freight lines running into the city, and are the site of some of the largest packing houses in the world. The amount of capital involved in the stock yards business is some \$30,000,000.



BIRD'S-EYE VIEW FROM THE NORTH PIER LIGHTHOUSE.



ONE OF ARMOUR'S ELEVATORS.

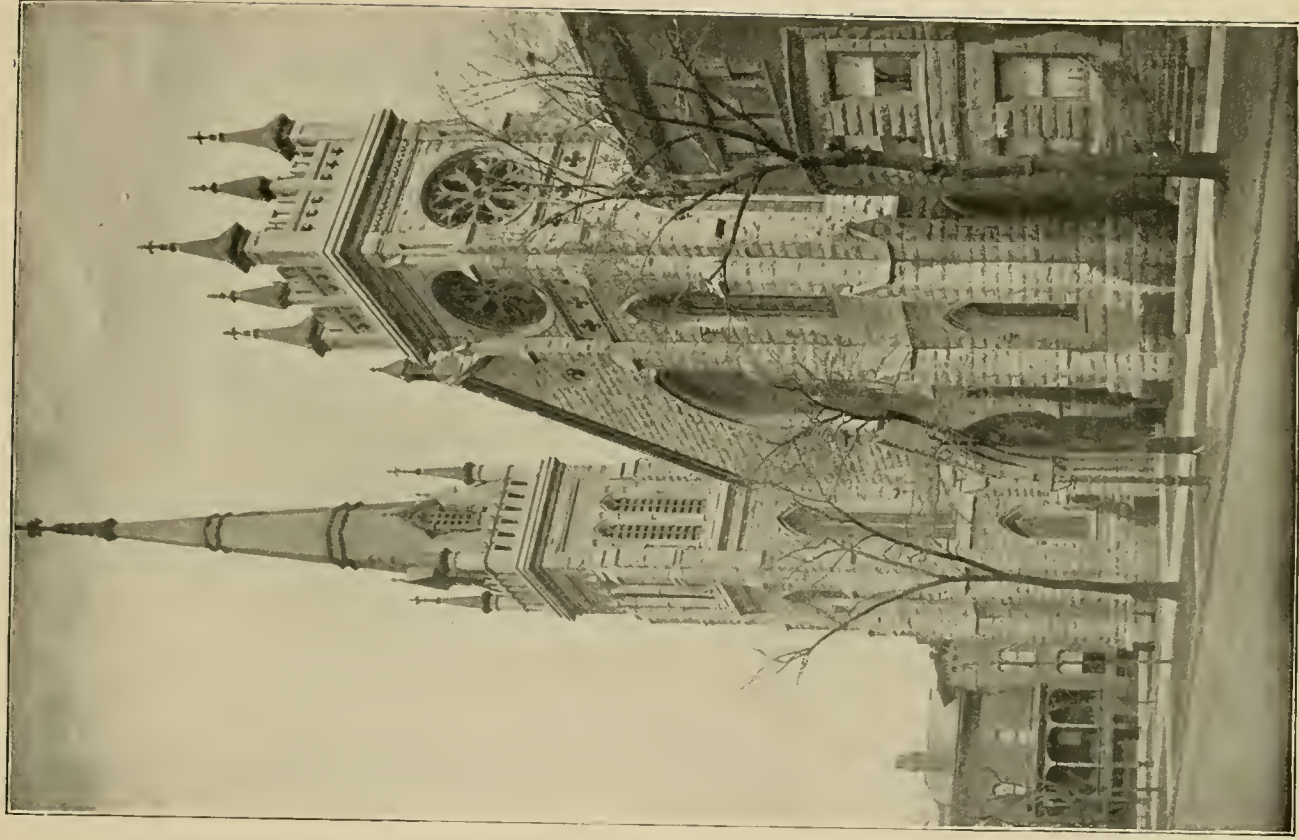




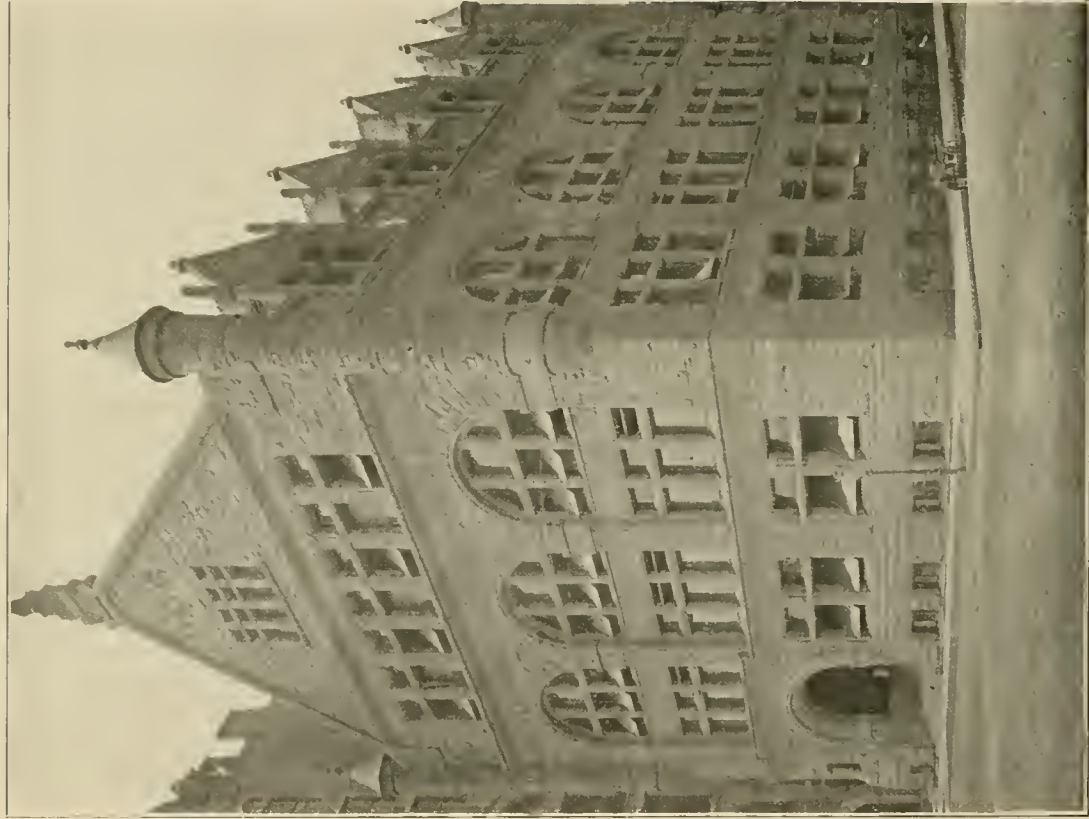
CHARACTERISTIC SCENE ON THE CHICAGO RIVER.



THE JEWISH TEMPLE,  
A Hebrew synagogue, is located at Indiana Avenue and Thirty-third Street.



MEDINAH TEMPLE,  
Corner of Dearborn Avenue and Walton Place.



THE CHICAGO CLUB,  
Corner of Michigan Avenue and Van Buren Street.



THE UNION CLUB HOUSE.

The Union Club was organized in 1878, and has occupied its present beautiful house, on Washington Place and Dearborn Avenue, since 1881.



THE FIRST REGIMENT ARMORY, I. N. G.,

Is one of the most solid of Chicago's many stone structures. Public subscription supplied the building fund, nearly \$500,000, and the site is Michigan Avenue and Sixteenth Street.



CARSON, PIRIE, SCOTT & COMPANY'S RETAIL STORE.  
Advantageously located at the southeast corner of State and Madison streets, at the intersection of two of Chicago's most important business streets.



A NOTABLE STRETCH OF BUILDINGS ALONG THE LAKE FRONT.

Michigan Avenue, looking north from the New Congress Hotel. Separated only by a court from the New Congress Hotel is the Auditorium Annex, and just across Congress Street is the Auditorium. Immediately to the north is the Fine Arts Building, and two blocks farther down the street can be seen the tall, white building of the Railway Exchange; while to the extreme right, its high, slender tower piercing the sky, is the building of Montgomery Ward & Company.



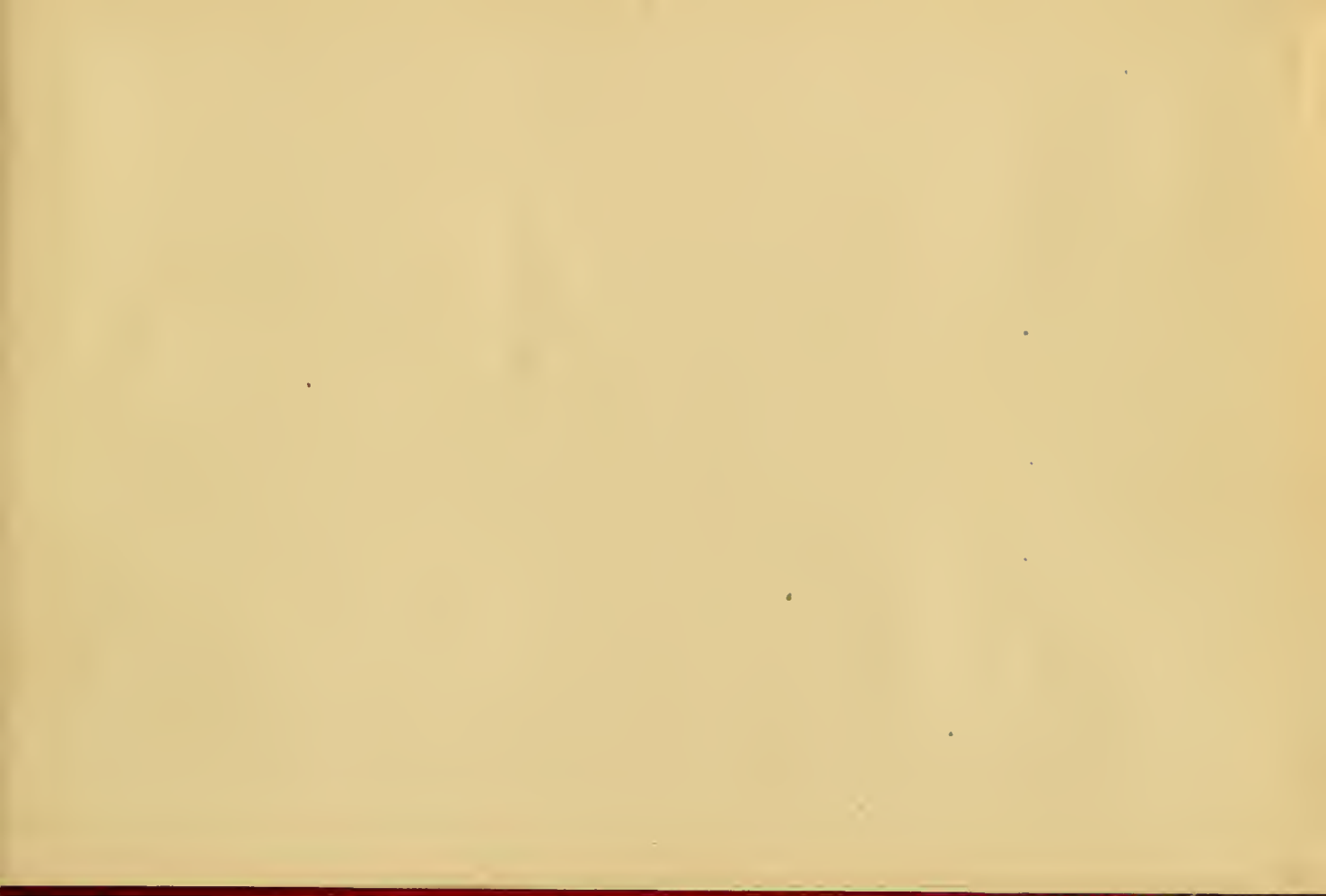


MARSHALL FIELD & COMPANY'S WHOLESALE STORE,  
Fifth Avenue, Adams, and Quincy streets. One of the finest and most imposing stone structures in the city.



LE Ja '13

CHICAGO MAIN WATER-WORKS, NORTH SIDE,  
Chicago Avenue and Lake Shore Drive.











LIBRARY OF CONGRESS



0 014 752 970 3